



CGW EVO

SPARE PARTS LIST

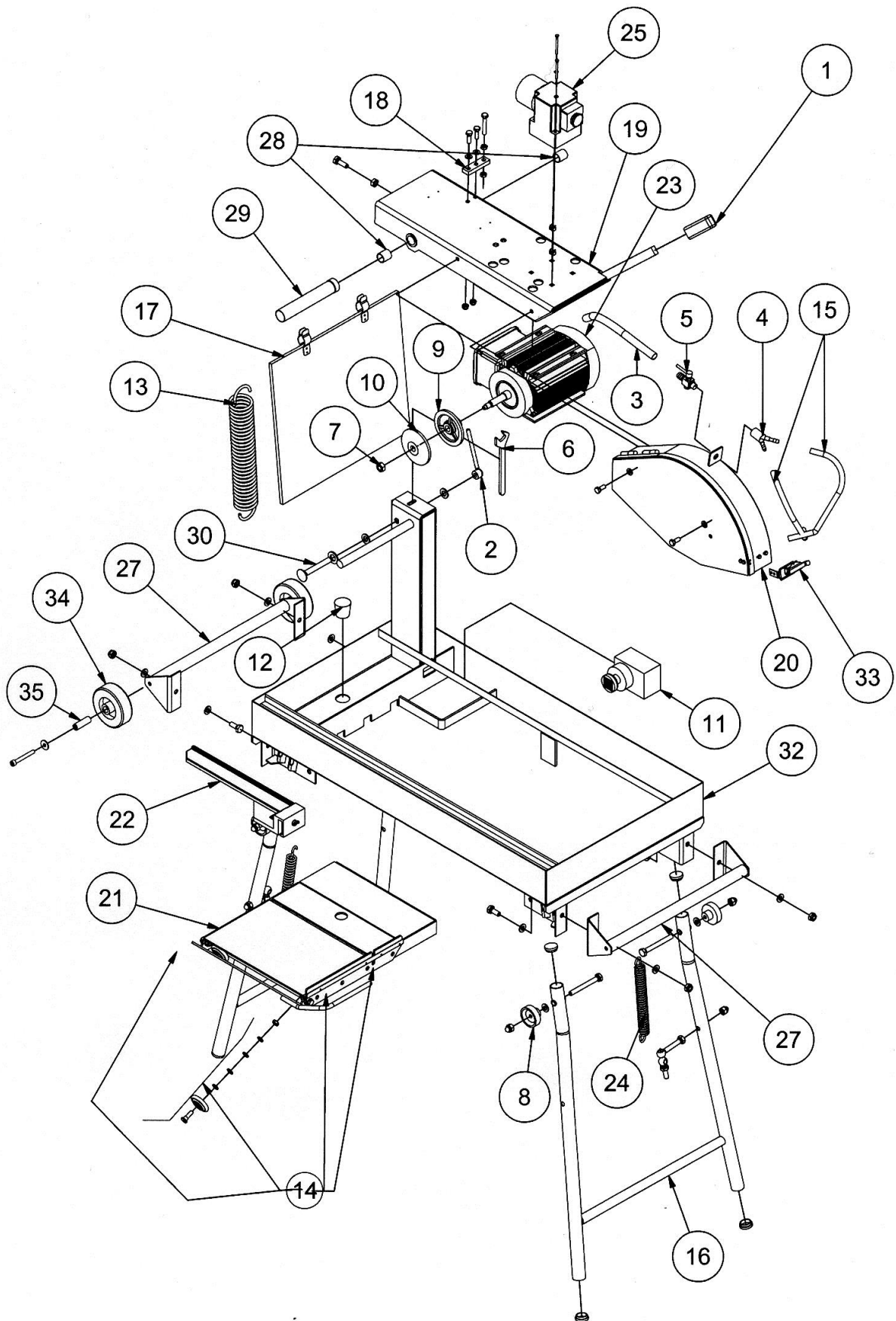
1 Spare parts list

POS.	CODE	DESCRIPTION	TYPE (*)	REMARKS
1	310004051	Handle	S	
2	310004191	Blocking handgrip	S	
3	310002069	Hose from pump to blade guard	W	
4	310004233	Y distributor	W	
5	310004262	Water tap	W	
6	310004306	Spanner 30mm	S	
7	310048259	Blade securing nut	S	
8	310035383	Leg fitting nut	S	
9	310048257	Inside collar	S	
10	310048258	Outside collar	S	
11	310004389	Electric water pump 230V	W	Machine 230V
	310005623	Electric water pump 115V	W	Machine 115V
12	310005257	Drain plug	S	
13	310004305	Spring cutting head	S	
14	310004676	Sheaves (set of 4)	W	
15	310002235	Tubes water nozzles (set of 2)	W	
16		Support leg	S	
17	310007307	Water curtain	W	
18	310002326	Head stop	S	
19		Cutting head	S	
20	310324893	Blade guard	S	
21	310005262	Conveyor cart cpl.	S	
22	310064856	Guide-a-cut	S	
23	310047701	Electric motor 230V	S	Machine 230V
		Electric motor 115V	S	Machine 115V
24	310002114	Foot spring	S	
25	310005263	Main switch 230V	W	Machine 230V
	310005622	Main switch 115V	W	Machine 115V
27	310308562	Transport handle	S	
28	310005129	Self lubricating ring (set of 2)	W	
29	310007304	Curtain support	S	
30	310005264	Head locking screw	S	
32	310323601	Frame	S	
33	310065583			
34	310005496	Transport wheel	W	
35	310034302	Axle for wheel	S	

(*): S = Spare part, W = Wear part

Wear parts are worn out through normal use of the machine. The wear period depends a lot on the intensity of use of the machine. Wear parts must be serviced, used and eventually changed following the indications of the manufacturer. Any wear due to normal use of the machine will not be considered as a case of warranty. Genuine Clipper replacement parts should always be used.

2 Exploded parts drawings





SAINT-GOBAIN ABRASIVES

190, Bd. J. F. Kennedy
L-4930 BASCHARAGE
LUXEMBOURG

Tel.: ++352 50401-1

Fax: ++352 501633

e-mail: sales.nlx@saint-gobain.com

www.construction.norton.eu

26.09.2008