

NORTON
SAINT-GOBAIN

clipper

FLOOR SAW CS 352 P6,5

Transforming
surfaces
...and beyond




SAINT-GOBAIN

FLOOR SAW CS 352 P6,5

FEATURES & BENEFITS

- Compact design to help with storage when space is limited
- Large diameter rear wheels that are coated with hard rubber, giving the machine stability and sturdiness
- Easy to use cutting depth adjuster keeps the operator in control at all times
- Lifting hook for easy transportation
- Emergency stop button



TECHNICAL INFORMATION

Item No.	70184632007	Power source	Petrol	Water tank capacity (removable)	25 L
EAN 13 code	5450248810704	Motor type	HONDA GX200	Tool speed RPM	2800 min ⁻¹
		Power	4,8kW (6,5 hp)	Starter	Recoil
		Blade x bore	Ø 350 x 25,4mm	Raise and lower	Manual
		Max. cutting depth	115mm	Propelling	Push
		Dimensions (LxWxH)	900 x 520 x 970 mm	Hand Arm Vibrations	5,56 m/s ²
		Weight	69kg	Sound power / pressure level	100 dB (A) / 84 dB (A)



6,5 hp



4,8kW



PETROL

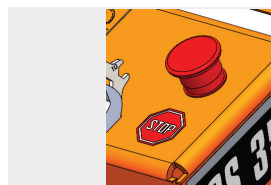
PRODUCT FEATURES



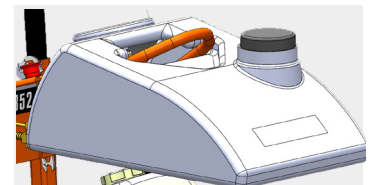
MAX CUT DEPTH



ADJUSTABLE HANDLE HEIGHT



EMERGENCY BUTTON



LIFTING HOOK AND REMOVABLE WATER TANK



Saint-Gobain Abrasives
251 rue de l'Ambassadeur
78700 Conflans
France

Tel: +33 (0)1 34 90 40 00
Fax: +33 (0)1 39 19 89 56

www.nortonabrasives.com
www.youtube.com/NortonAbrasivesEMEA

Norton is a registered trademark of Saint-Gobain Abrasives.