

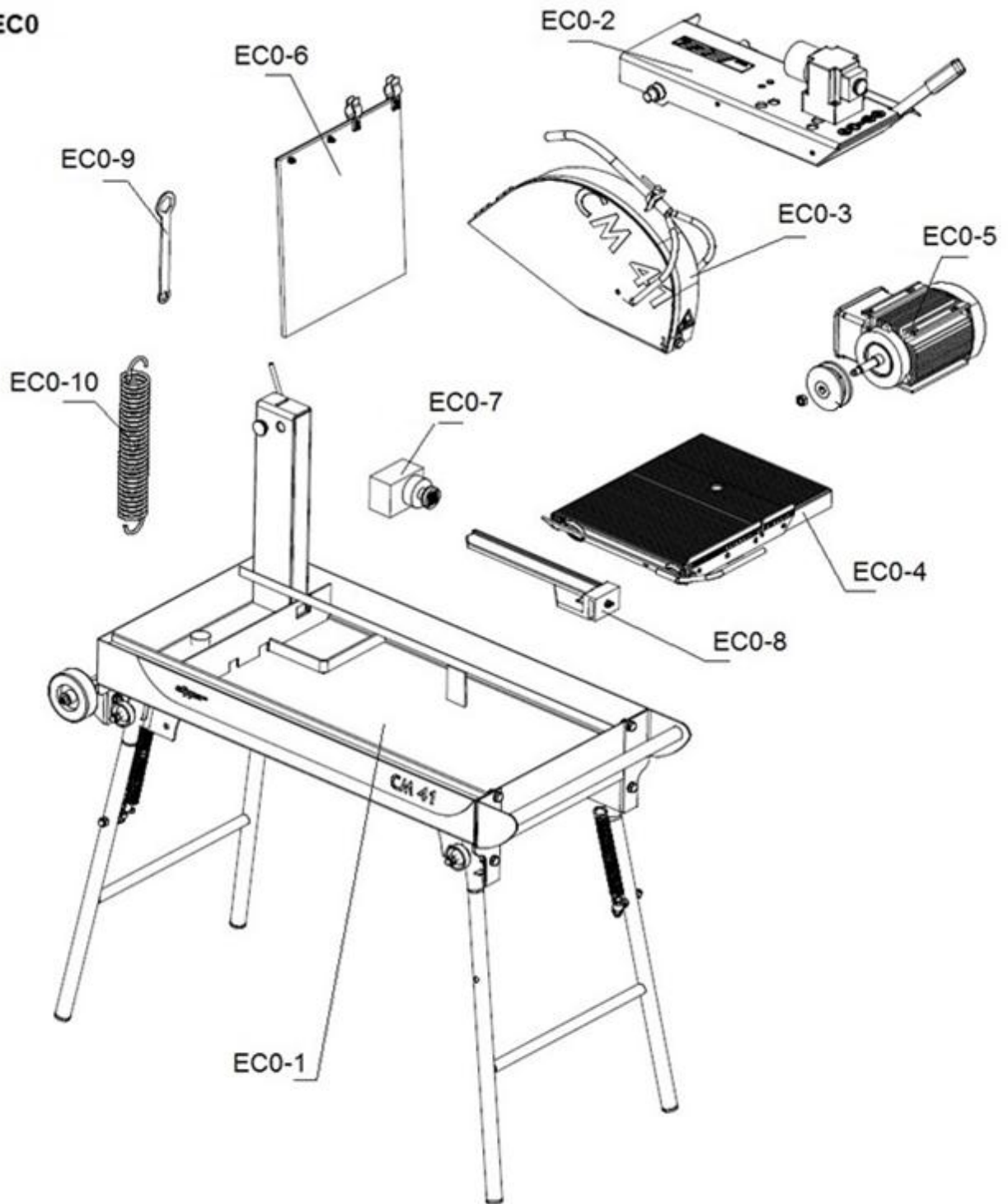
CM 41

SPARE PART LIST



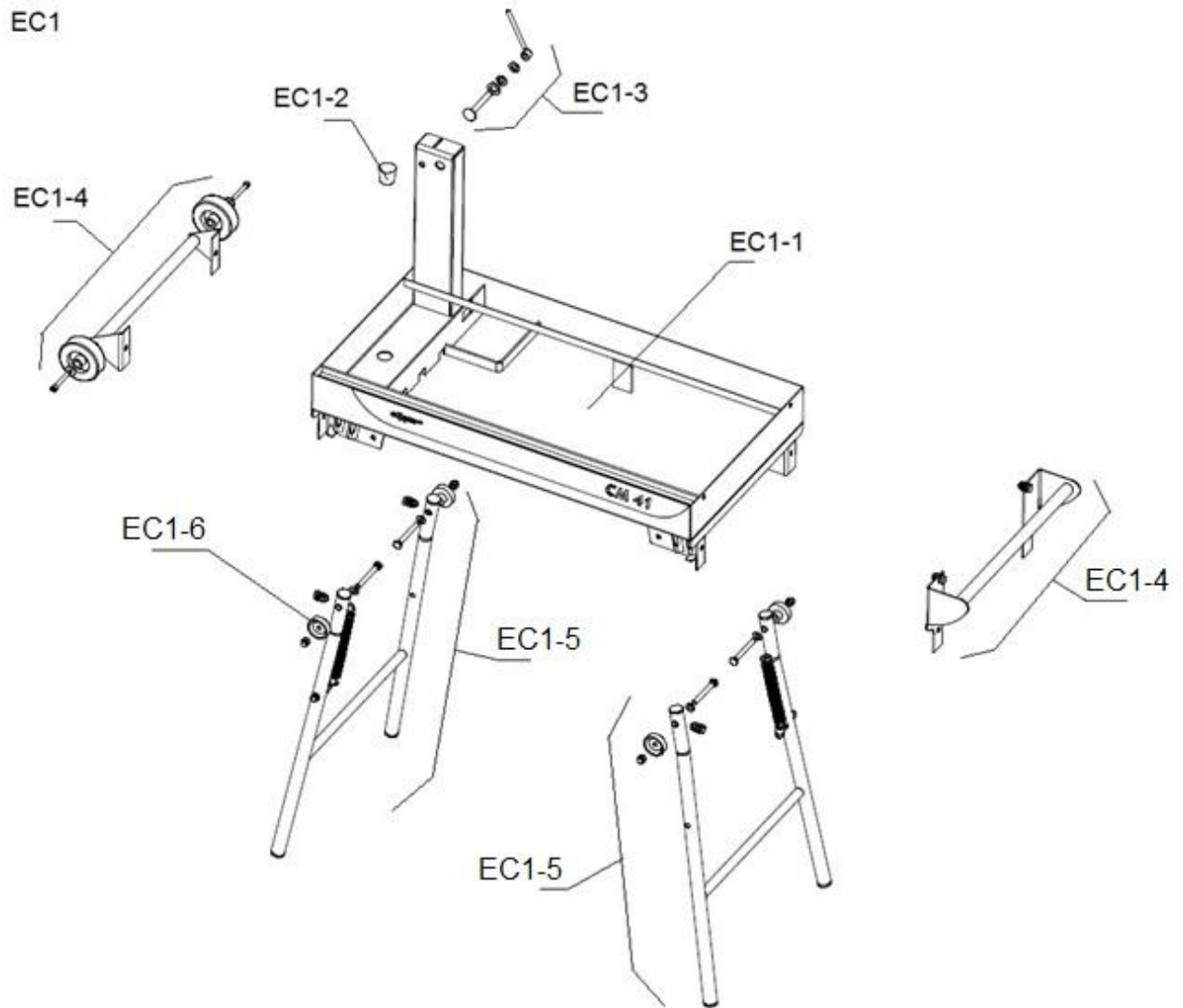
EXPLODED / POS.	DESCRIPTION	ITEM NUMBER	TYPE (*)	QTY
EC0-1	See exploded view EC1			
EC0-2	See exploded view EC2			
EC0-3	Blade guard assy.	00510103084	S	1
	SCREW DIN 933 – M10X22	NA	H	1
	WASCHER DIN 125 - Ø10,5		H	2
	NUT DIN 933 - M10		H	1
	SCREW DIN 933 – M8X20		H	2
	WASCHER DIN 125 - Ø8,4		H	4
	NUT DIN 934 - M8		H	2
EC0-4	Trolley complete	00510103086	S	1
	SCREW DIN 933 – M8X25	NA	H	2
	WASCHER DIN 125 - Ø8,4		H	6
	NUT DIN 985 - M8		H	2
	SCREW DIN 933 – M8X90		H	2
	NUT DIN 934 - M8		H	4
	SCREW DIN 933 – M6X20		H	2
	WASCHER DIN 125 - Ø6,3		H	4
	NUT DIN 985 - M6		H	2
EC0-5	Electric motor 220V	00310047701	W	1
	Electric motor 115V	00510003849	W	1
EC0-6	Splash guard assy.	00310007307	W	1
	SCREW DIN 933 – M6X25	NA	H	2
	WASCHER DIN 125 - Ø6,3		H	4
	NUT DIN 985 - M6		H	2
	SCREW DIN 933 – M4X20		H	4
	WASCHER DIN 125 - Ø4		H	4
	NUT DIN 985 - M4		H	4
EC0-7	Water pump assy. 220V	00310446803	W	1
EC0-8	Angular guide a cut	00310064856	S	1
EC0-9	Wrench17 30mm	00310004306	S	1
EC0-10	Spring	00310004305	S	1

EC0

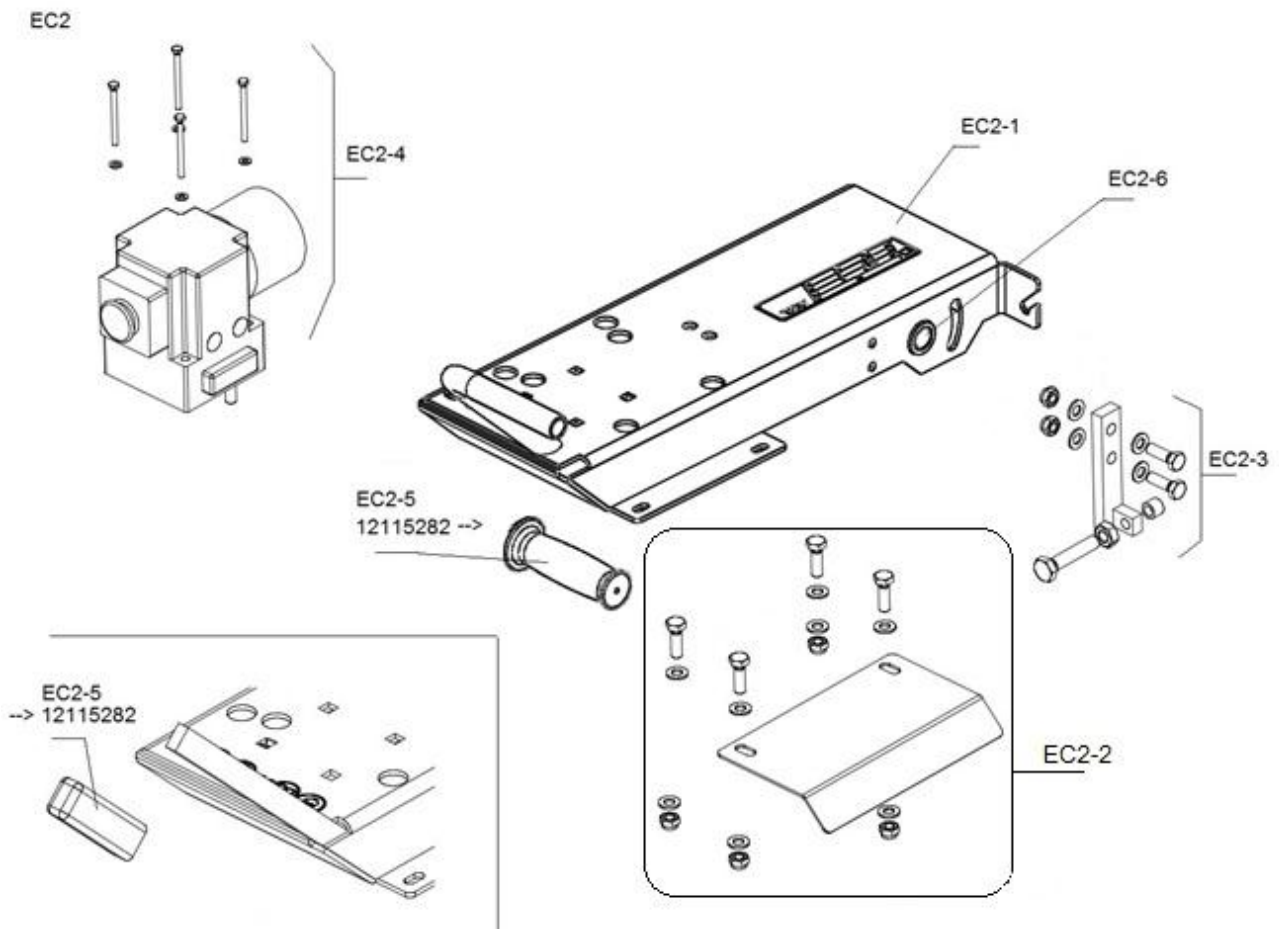


EXPLODED / POS.	DESCRIPTION	ITEM NUMBER	TYPE (*)	QTY
EC1-1	Frame	NA	S	1
EC1-2	Cap	00310005257	S	1
EC1-3	Locking of cutting head	00510103017	S	1
	SCREW DIN 603 – M12X90	NA	H	1
	WASCHER DIN 125 - Ø13		H	3
EC1-4	Handle kit	00510111433	S	1
	Rear handle	NA	S	1
	SCREW DIN 912 - M8X60		H	2
	WASCHER DIN 9021 - Ø8,4		H	2
	SCREW DIN 933 – M10X25		H	2
	WASCHER DIN 125 - Ø10,5		H	4
	NUT DIN 985 - M10		H	2
	Front handle		S	1
	SCREW DIN 933 - M10X22		H	4
	WASCHER DIN 125 - Ø10,5		H	8
	NUT DIN 985 - M10		H	4
EC1-5	Front or rear feet + spring kit	00510103019	S	1
	SCREW DIN 933 - M10X85	NA	H	2
	WASCHER DIN 125 - Ø10,5		H	2
	NUT BORGNE - M10		H	2
	SCREW DIN 444 – M10X60		H	1
	NUT DIN 934 - M10		H	1
	NUT BORGNE - M10		H	1
	SCREW DIN 444 - M10X45		H	1
	NUT DIN 985 - M10		H	1
EC1-6	Knob M10 (set of 4)	00510109338	S	1

EC1

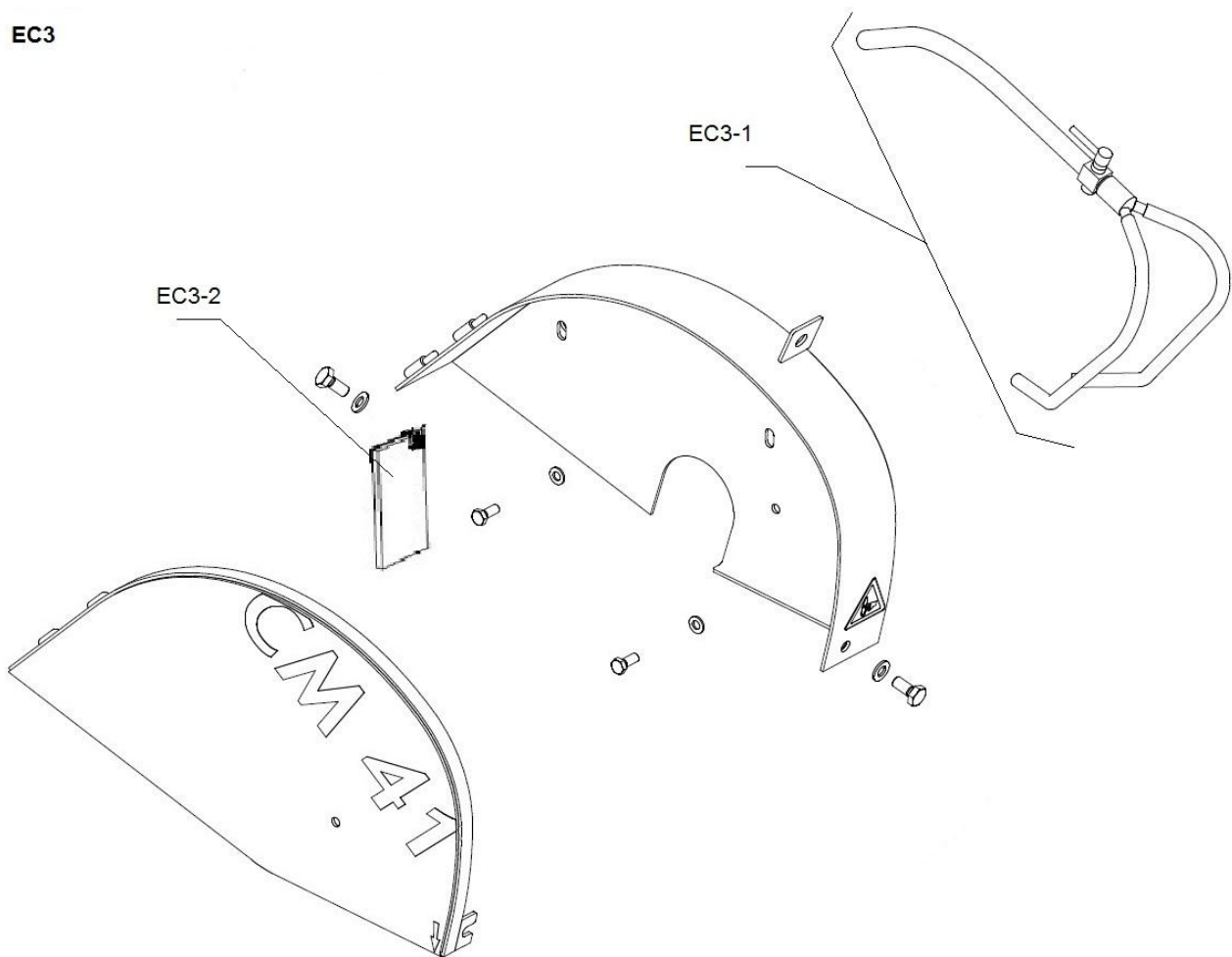


EXPLODED / POS.	DESCRIPTION	ITEM NUMBER	TYPE (*)	QTY
EC2-1	Cutting head assy.	00510103015	S	1
EC2-2	Motor protection + fixing kit	00310368619	S	1
	SCREW DIN 933 - M8X25	NA	H	2
	WASCHER DIN 125 - Ø8,4		H	8
	WASHER DIN 128 - Ø8		H	4
	NUT DIN 985 - M8		H	2
EC2-3	Stop assy.	00510102892	S	1
	SCREW DIN 933 - M8X25	NA	H	2
	WASCHER DIN 125 - Ø8,4		H	4
	NUT DIN 985 - M8		H	2
	SCREW DIN 933 - M10X50		H	1
	NUT DIN 934 - M10		H	1
EC2-4	Switch assy.	00310005263	S	1
	SCREW DIN 933 - M4X50	NA	H	4
	WASCHER DIN 125 - Ø4,3		H	4
EC2-5	Handle (→ 12115282)	00310004051	W	1
	Handle (12115282 →)	00310004190		
EC2-6	Bearing (set of 2)	00510109344	W	1



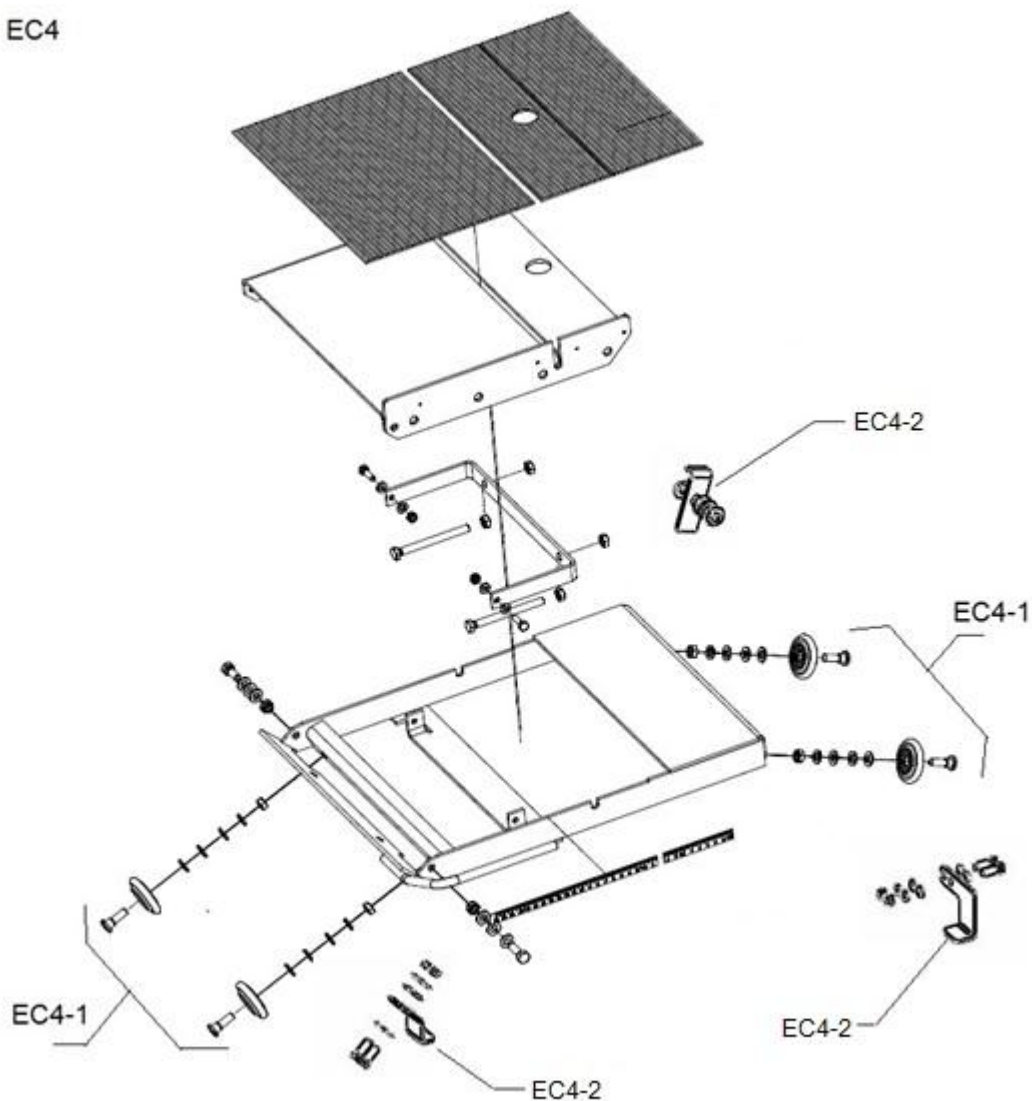
EXPLODED / POS.	DESCRIPTION	ITEM NUMBER	TYPE (*)	QTY
EC3-1	Watering system assy.	00510104923	W	1
EC3-2	VORHANG-SCHUTZ CM41QW	00510104705	W	1
	SCREW DIN 933 – M8X25	NA	H	1
	WASHER DIN 125 - Ø8,4		H	2
	NUT DIN 985 - M8		H	1

EC3



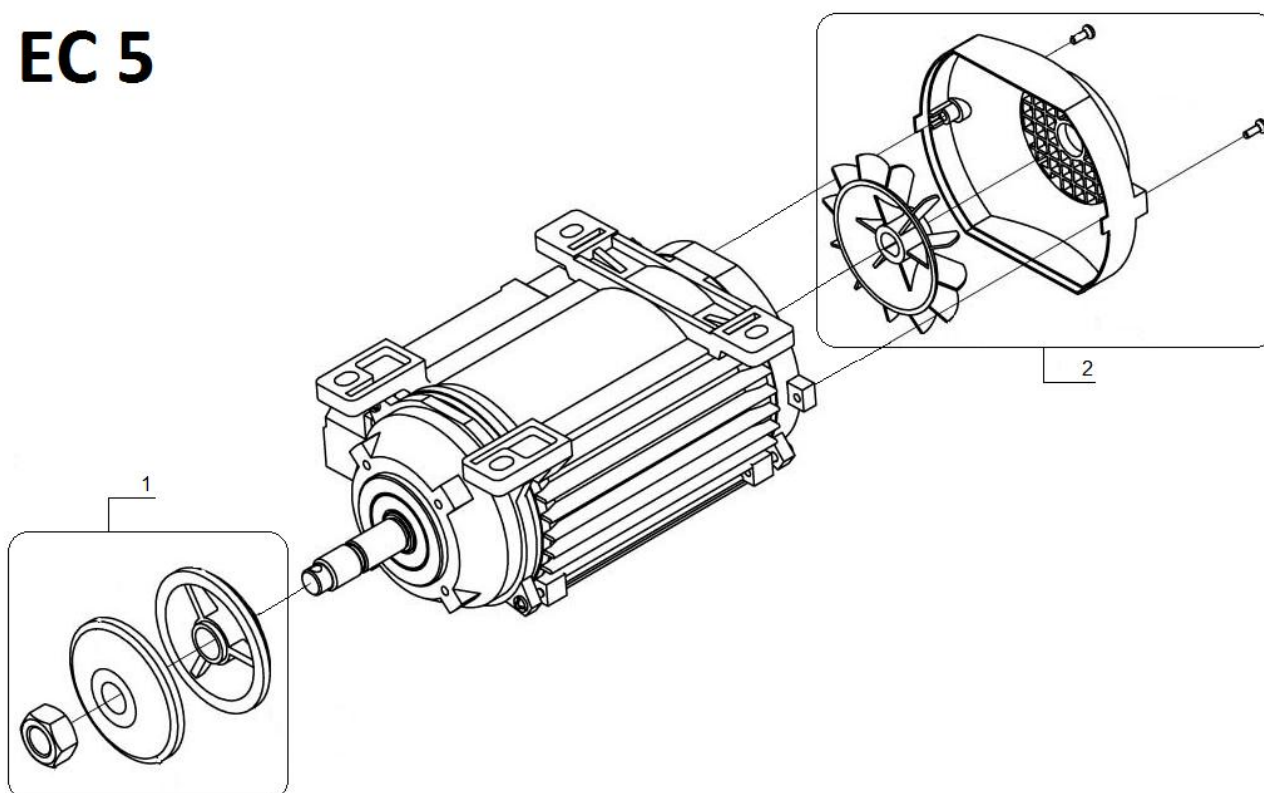
EXPLODED / POS.	DESCRIPTION	ITEM NUMBER	TYPE (*)	QTY
EC4-1	Trolley wheels (set of 4)	00310004676	W	1
	SCREW DIN 84 – M8X25	NA	H	4
	WASCHER DIN 125 - Ø8,4		H	8
	WASCHER DIN 127 - W8		H	4
	NUT DIN 934 - M8		H	4
EC4-2	Locking Kit	00510109345	S	1
	SCREW DIN 933 – M6X20	NA	H	4
	WASHER DIN 125 – Ø6,4		H	8
	WASHER DIN 127 – W4		H	4
	NUT DIN 934 – M6		H	4
	SCREW DIN 933 – M10X30		H	1
	WASHER DIN 125 – Ø10,5		H	4
	NUT DIN 985 – M10		H	4

EC4



ECLATE / POS.	DESCRIPTION	N° ARTICLE	Type (*)	QTE
EC 5 / 1	Flanges + Nut kit 230V	510103114	S	1
	Flanges + Nut kit 115V	510103115		1
EC 5 / 2	Airscrew + cover of ventilator 230V	510111431	S	1
	Airscrew + cover of ventilator 115V	510111501		1
	SCREW DIN 7985H – M5X30	NA	H	2

EC 5



(*): S = Spare part, W = Wear part, H = Hardware, NA = Not Available

NA = Not Available / this component is not available as wear part.

H : Not supplied alone / this component is a component standard which you can easily find at all the standard retailers of parts. All the standard components of assembly have a quality grade 8.8. We recommend to don't use a quality grade lower than 8.8.

W : Wear parts are worn out through normal use of the machine. The use period depends a lot on the intensity of work of the machine.

Wear parts must be serviced, used and eventually changed following the indications of the manufacturer. Any wear due to normal use of the machine will not be considered as a case of warranty.

S : Genuine CLIPPER replacement parts should always be used.

www.construction.norton.eu

Saint-Gobain Abrasives

190, Bd. J. F. Kennedy
L-4930 BASCHARAGE
LUXEMBOURG

Tel: ++352 50401-1

Fax: ++352 501633

e-mail: sales.nlx@saint-gobain.com