

# CR16 Rammer

## OPERATING INSTRUCTIONS

Translation of the original Instructions



**NORTON**  
SAINT-GOBAIN®

**clipper®**



## Declaration of conformity

The undersigned manufacturer: **SAINT - GOBAIN ABRASIVES S.A.**  
**190, BD. J. F. KENNEDY**  
**L-4930 BASCHARAGE**

Declares that this product: Norton clipper **CR16** Code: **70184608012**

Is in conformity with the following Directives:

**"MACHINES" 2006/42/CE**

**"NOISE" 2000/14/CE**

And European standard :

- **EN 500-1** Mobile road construction machinery. Safety - Part 1: Common requirements
- **En 500-4** Mobile road construction machinery - Safety - Part 4: Specific requirements for compaction machines

Valid for machines as of serial number : 450xxxxxxx

Storage site for the technical documents :

Saint-Gobain Abrasives 190, Bd. J. F. Kennedy 4930 BASCHARAGE, LUXEMBOURG

This declaration of conformity loses its validity when the product is converted or modified without agreement.

Bascharage, Luxembourg, le 01.09.2019 :



François Chianese, executive officer.

# Norton Clipper CR16

## OPERATING INSTRUCTIONS

### TABLE OF CONTENTS

#### **1 BASIC SAFETY INSTRUCTIONS**

---

- 1.1** *Symbols*
- 1.2** *Machine plate*
- 1.3** *Safety instructions for particular operating phases*

#### **2 MACHINE DESCRIPTION**

---

- 2.1** *Short description*
- 2.2** *Purpose of use*
- 2.3** *Layout*
- 2.4** *Technical Data*
- 2.5** *Statement regarding the vibration emission*
- 2.6** *Statement regarding noise emission*

#### **3 ASSEMBLY AND COMMISSIONING**

---

#### **4 TRANSPORT AND STORING**

---

- 4.1** *Securing for transport*
- 4.2** *Transport procedure*
- 4.3** *Long period of inactivity*

#### **5 OPERATING THE MACHINE**

---

- 5.1** *Site of work*
- 5.2** *Preparing the site*
- 5.3** *Floating and finishing operation*

#### **6 MAINTENANCE AND SERVICING**

---

- 6.1** *Maintenance of the machine*

#### **7 FAULTS: CAUSES AND CURES**

---

- 7.1** *Fault-finding procedures*
- 7.2** *Trouble-shooting guide*
- 7.3** *Spare parts*

## **1-BASIC SAFETY INSTRUCTIONS**

The Norton Clipper CR16 is exclusively designed for compaction mainly on construction sites.

Uses other than the manufacturer's instructions shall be considered as contravening the regulations. The manufacturer shall not be held responsible for any resulting damage. Any risk shall be borne entirely by the user. Observing the operating instructions and compliance with inspection and servicing requirements shall also be considered as included under use in accordance with the regulations.

**1.1 Symbols**

Important warnings and pieces of advice are indicated on the machine using symbols. The following symbols are used on the machine:



Read operator's instructions



Ear protection must be worn



Hand protection must be worn



Eye protection shall be worn



For dry cutting in exceptionally cases , wear additional dust



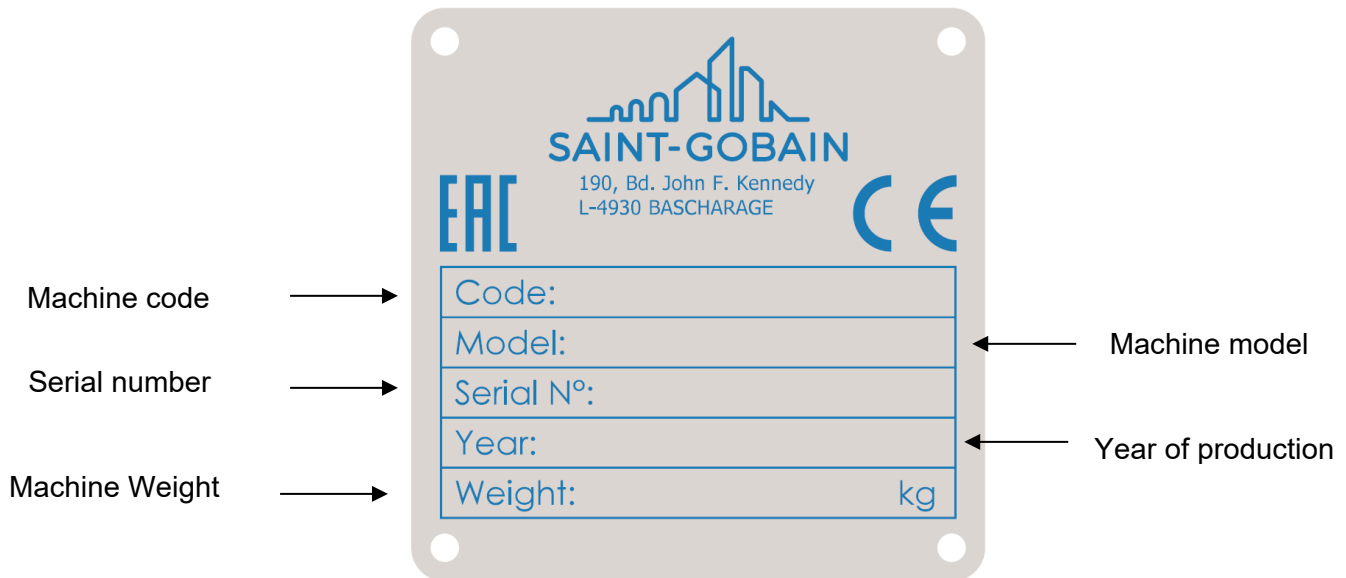
Shoes protection must be worn



Use only the integrated crane hook if you lift up

**1.2 Machine plate**

Important data can be found on the following plate located on the machine:



### 1.3 Safety instructions for particular operating phases

#### Before starting the work

- Before commencing work, make yourself familiar with the working environment at the place of use. The working environment includes: obstacles in the area of work and manoeuvre, the firmness of the floor, necessary protection at the site relating to public thoroughfares and the availability of help in the event of accidents..
- This machine must only be used for its intended purpose, and must be operated only by the well-trained personnel.
- Know how to stop the engine quickly, and understand the operation of all controls BEFORE attempting to operate the machine.
- The machine must be operated on ground where stability is guaranteed. When working near the rim of excavated trenches, be alert to potential caving edges, falling rocks, and slides.
- The exhaust gas contains poisonous and hazardous CARBON MONOXIDE. Exposure can cause loss of consciousness and may lead to death. Use this machine in a well ventilated area. Never operate the machine in room, warehouse, tunnel, mine, or in a deep trenches where the exhaust may not be properly vented to the atmosphere.
- The exhaust pipe and muffler is subject to extremely high temperature during and after operation. Do not touch it unless these are completely cooled off. Let the engine cool before storing the machine indoors.
- Do not attempt to run the machine with any of the covers, labels, and/or any other components removed from the machine. Unauthorized alteration or modification of the engine or the machine is prohibited, as it will affect the machine's performance and may lead to danger in operation.

## 2-MACHINE DESCRIPTION

Any modification, which could lead to a change in the original characteristics of the machine, may be done only by Saint-Gobain Abrasives who shall confirm that the machine is still in conformity with the safety regulations.

### 2.1 Short description

The rammer CR16 is suitable for repairing asphalted surfaces, for small compacting jobs and for preparing green areas

As with all other NORTON products, the operator will immediately appreciate the attention given to detail and quality of materials used in construction. The machine and its component parts are assembled to high standards assuring long life and minimum maintenance.

### 2.2 Purpose of use

The percussion and the vibration required for compaction are produced by the vibrator located on the compacting plate.

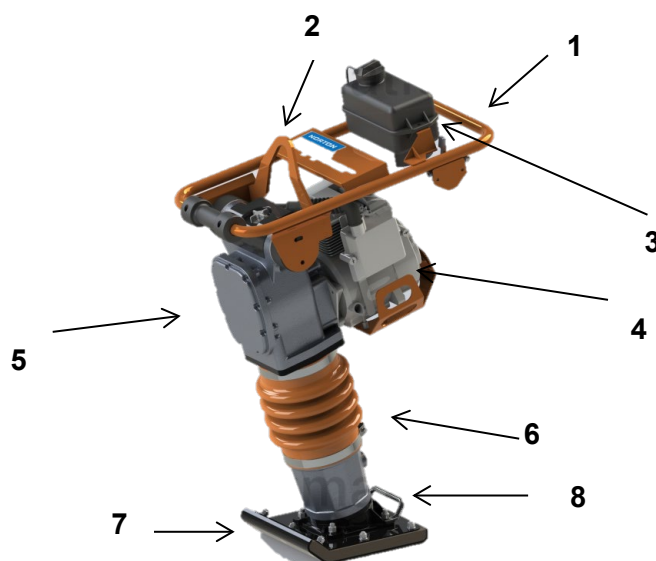
The engine starts the vibrator and the torque is transmitted by the centrifugal clutch and the belt.

To allow the minimum of the driving motor, the centrifugal clutch, at low engine speeds, interrupts the flow of power towards the exciter. The compactor must always be used with the gas handle in the "OPERATIVE" position.

The motor support and the compaction plates are connected by 4 shock absorbers, which are mounted to prevent the vibrations reaching the operator.

Use the machine only for the purpose for which it was designed.

### 2.3 Layout



**Handlebar (1)**

Jig welded steel construction is connected by 4 shock mount on the frame of the machine to reduce the vibrations reach the operator

**Lifting eye (2)**

To lift the machine easily and safely, a lifting eye is located over the engine. This allows a balanced lifting of the machine.

**Petrol tank (3)**

The 2 liter fuel tank is located on the handlebar for easy filling.

**Thermal Engine (4)**

The machine is equipped with a Honda engine GXR120 with 2.6 kW.

**Transfert box (5)**

oil bath transfer box which transmits the vibration to the soleplate via the piston / cylinder

**Piston/Cylinder (6)**

Transmits the vibration to the soleplate

**SolePlate (7)**

The sole plates have rounded edges and raised to avoid marking the surface

## 2.4 Technical DATA

Model	Norton Clipper CR16
Ramming soleplate Width x Length	280x330mm
Operating weight	70 kg
Overall Length	720mm
Overall Height	1045mm
Overall Width	415mm
Centrifugal force	16 kN
Impact Number per minutes	640-680
Stroke	50-75mm
Engine	Air-cooled single-cylinder 4 stroke Honda GXR120
Engine power	kW 2,6 (HP 3,5)
rpm	3550-3600
Displacement	121 cm <sup>3</sup>
Fuel	Petrol
Fuel consumption	1,5
Fuel tank capacity	3,1 ltrs

## 2.4 VIBRATION MEASUREMENTS

Products are tested for hand/arm vibration level in accordance with annex D prEN500-4:2001

The hand/harm vibration level is **8** m/s<sup>2</sup>

The rammer has been tested on a "macadam" surface, produced with not cleaned stone crusher grit, with 16 mm medium diameter (with components which have diameter that goes from 10 to 20 mm).

## 2.5 SOUND MEASUREMENTS

The product has been produced in accordance with the standard 2000/14/CE, procedure I annex VI. Measured sound power level **105** [dB(A)] and guaranteed sound power level **108** [dB(A)] on a significant equipment.

## 3-ASSEMBLY AND COMMISSIONING

### Starting the machine



<p>Turn the fuel valve to the ON position. Fully press the dead-man handle against the main handle.</p>	<p>Move the choke lever to the CLOSED position. NOTE: do not use the choke if the engine is warm or the air temperature is high.</p>

<p>Move the throttle control lever slightly to the left. Put the engine switch on ON.</p>	<p>Pull the starter grip lightly until you feel resistance, then pull briskly. CAUTION: Do not allow the starter grip to snap back against the engine. Return it gently to prevent damage to the starter.</p>

<p>As the engine warms up, gradually move the choke lever to the OPEN position. Position the throttle control lever for the maximum engine speed.</p>

To stop the engine, release the dead-man handle, move the throttle control lever fully to the right, then turn the engine switch to the OFF position. Turn the fuel valve to the OFF position.

CAUTION: when the machine is switched off, the tools will continue turning slowly to complete stop. Be therefore very careful to avoid injuries.

## **4-Transport and storing**

### **4.1 Securing for transport**

Conform yourself to work regulations, in order to transport the machine safely. To help you transport the machine, you can remove the transport tube from under the handle and located in the front hole of the machine.

### **4.2 Transport procedure**

Conform yourself to work regulations, in order to transport the machine safely. To help you transport the machine, you can remove the transport tube from under the handle and located in the front hole of the machine.

### **4.3 Long period of inactivity**

If the machine is not going to be used for a long period, completely clean the machine and disassemble the tools. The storage site must be clean, dry and at a constant temperature.

## **5- OPERATING THE MACHINE**

### **5.1 Site of work**

- Remove from the site anything, which might hinder the working procedure!
- Make sure the site is sufficiently well lit!
- Make sure you have a continual adequate view of the working area so you can intervene in the working process at any time!
- Keep other staff out of the area, so you can work securely.

### **5.2 Preparing the site**

Ad equation to compaction, it will be necessary to identify the characteristics of soils and material, to study their ability

## **6- MAINTENANCE AND SERVICE**

### **6.1 Maintenance of the machine**

To ensure a long-term quality from the use of the Clipper compactors CR16, please follow the maintenance plan below:

		Daily	After 20h00	Monthly	After 100h00	After 200h00
Air filter	Check filter, clean or replace if necessary					
Oil filter	Check filter oil level (only oil bath models)					
Fuel tank	Check fuel tank and fuel cap lid. If necessary replace.					
Engine	Check oil level, refill if necessary					
Engine	Check engine RPM					
Transfert Box	Check exciter lid					
Engine	First oil change					
	Clean spark plug					
Fuel Tank	Check fuel filter, replace if necessary					
Engine and transfert box	Oil change					
	Oil change					

## 7-FAULT: CAUSES AND CURES

### 7.1 Fault –finding procedures

Should any fault occur during the use of the machine, turn it off. Any works dealing with the engine of the machine can only be carried out by a qualified technician.

### 7.2 Troubles-shooting guide

TROUBLE	POSSIBLE CAUSE	REMEDY
Engine won't start.	Insufficient fuel.	Refuel with Automotive gasoline.
	Fuel Cock is closed.	Open the fuel cock.
	Engine Switch is set to OFF position.	Set the switch to ON.
	Spark Plug contaminated or damaged.	Replace the spark plug.
	Improper spark plug gap	Correct the gap.
Engine stops suddenly,	Main jet of the carburetor being clogged with dirt.	Take out the main jet from carburetor, and clean the the jet with compressed air.
	Air Filter Element dirty.	Clean the element.
	Spark Plug cap is loose.	Tightly fit the plug cap to the plug.
Engine runs, but the machine	Lack of engine power. Clutch slipping.	See above. Dismantle the clutch assembly, and clean the shoe and drum with proper solvent. Replace the shoe if necessary.
	Crank/Gear unit damaged.	Contact dealer.

### 7.3 Spare parts

In order to consult the spare parts lists, we invite you to visit the after-sales website of Norton Clipper by using the following address:

<https://spareparts.nortonabrasives.com>

For a quick access, you can also use the QR Code shown below using your mobile phone:



This electronic catalogue provides exploded views and spare parts lists for different machines designed by Norton Clipper so you can find references you need.

When ordering spare parts, please mention:

- The serial number.
- The code of the part.
- The exact denomination.
- The number of parts required.
- The delivery address.
- Please indicate clearly the means of transportation required such as "express" or "by air". Without specific instructions, we will forward the parts through the means which seem appropriate to us --- but which is not always the quickest way.

Clear instructions will avoid problems and faulty deliveries.

If not sure, please send us the defective part. In the case of a warranty claim, the part must always be returned for evaluation. Spare parts for the motor can be ordered with the manufacturer of the motor or with their dealer, which is often quicker and cheaper.

This machine has been manufactured by

Saint-Gobain Abrasives S.A.

190, Bd. J.F. Kennedy

L- 4930 BASCHARAGE

Grand-Duché de Luxembourg.

Tel.: 00352-50401-1

<http://www.construction.norton.eu>

e-mail: [sales.nlx@saint-gobain.com](mailto:sales.nlx@saint-gobain.com)

Guarantee can be claimed and technical support obtained from your local distributor where machines, spare parts and consumables can be ordered as well:

SAINT-GOBAIN ABRASIVES  
INDUSTRIEWEG 21  
9420 ERPE-MERE  
BELGIUM  
TEL: +32(0) 2 267 21 00

SAINT-GOBAIN ABRASIVES, S.R.O.  
POČERNICKÁ 272/96, MALEŠICE  
108 00 PRAHA 10  
CZECH REPUBLIC  
TEL: +420 255 719 326  
FAX: +420 255 719 321

SAINT-GOBAIN ABRASIVES A/S  
DYBENDALSVÆNGET 2,  
DK-2630 TAASTRUP  
DENMARK  
TEL: +45 4675 5244

PO BOX 643706  
FORTUNE TOWER OFFICE 2106  
JLT BLOCK C  
(NEXT TO METRO STATION)  
JUMEIRA LAKE TOWER, DUBAI  
UNITED ARAB EMIRATES  
TEL: +971 4 431 5154  
FAX: +971 4 431 5434

SAINT-GOBAIN ABRASIFS  
RUE DE L'AMBASSADEUR - B.P.8  
78 702 CONFLANS CEDEX  
FRANCE  
TEL: +33 (0)1 34 90 40 00  
FAX: +33 (0)1 39 19 89 56

SAINT-GOBAIN ABRASIVES GMBH  
BIRKENSTRASSE 45-49  
D-50389 WESSELING  
GERMANY  
TEL: +49 (0) 2236 8911-0 703-1  
+49 (0) 2236 8911-0 8996-0  
+49 (0) 2236 8911-0  
FAX: +49 (0) 2236 8911-0 703-367  
+49 (0) 2236 8911-0 8996-10  
FÜR DEN FACHHANDEL  
ÖSTERREICH  
TEL: +43 (00) 662 430 076

SAINT-GOBAIN ABRASIVES KFT.  
1225 BUDAPEST  
BÁNYALÉG U. 60/B.  
HUNGARY  
TEL: +36 1 371 22 50

SAINT-GOBAIN ABRASIVI S.P.A  
VIA PER CESANO BOSCONI 4  
I-20094 CORSICO MILANO  
ITALY  
TEL: +39 02 44 851  
FAX: +39 02 44 78 266

SAINT-GOBAIN ABRASIVES S.A.  
190 RUE J.F. KENNEDY  
L-4930 BASCHARAGE  
GRAND DUCHE DE LUXEMBOURG  
TEL: +352 50 401 1  
FAX: +331 83 717 792  
NO. VERT (FRANCE): 0800 906 903

SAINT-GOBAIN ABRASIFS, S.A.  
2 ALLÉE DES FIGUIERS  
AIN SEBAË - CASABLANCA  
MOROCCO  
TEL: +212 5 22 66 57 31  
FAX: +212 5 22 35 09 65

SAINT-GOBAIN ABRASIVES BV  
GROENLOSEWEG 28  
7151 HW EIBERGEN  
P.O. BOX 10  
7150 AA EIBERGEN  
THE NETHERLANDS  
TEL: +31 545 466466  
FAX: +31 545 474605

SAINT-GOBAIN ABRASIVES AS  
POSTBOKS 11, ALNABRU,  
0614 OSLO  
BROBEKKVEIEN 84,  
0582 OSLO  
NORWAY  
TEL: +47 63 87 06 00  
FAX: +47 63 87 06 01

SAINT-GOBAIN HPM POLSKA SP. Z O.O.  
UL. NORTON 1, 62-600 KOŁO  
POLAND  
TEL: +48 63 26 17 100  
FAX: +48 63 27 20 401

SAINT-GOBAIN ABRASIVOS, L. DA  
ZONA INDUSTRIAL DA MAIA  
I-SECTOR VIII, NO. 122  
APARTADO 6050  
4476 - 908 MAIA  
PORTUGAL  
TEL: +351 229 437 940

SAINT-GOBAIN GLASS  
BUSINESS UNIT ABRASIVI  
PUNCT DE LUCRU: LOC.VETIS,JUD.  
SATU MARE 447355  
STR. CAREIULUI 11  
PARC INDUSTRIAL RENOVATIO  
ROMANIA  
TEL: +40 261 839 709  
FAX: +40 261 839 710

SG HPM RUS  
58, F. ENGELS STR.  
STROENIE 2  
105082 MOSCOW  
RUSSIA  
TEL: +74 955 408 355  
FAX: +74 959 373 224

SAINT-GOBAIN  
ABRASIVES (PTY) LTD  
2 MONTEER ROAD  
ISANDO 1600  
P.O. BOX 67  
SOUTH AFRICA  
TEL: +27 11 961 2000  
FAX: +27 11 961 2184/5

SAINT-GOBAIN ABRASIVOS, S.A.  
CTRA. DE GUIPÚZCOA, KM. 7,5  
E-31195 BERRIOPLANO (NAVARRA)  
SPAIN  
TEL: +34 948 306 000  
FAX: +34 948 306 042

SAINT GOBAIN ABRASIVES AB  
GÅRDSFOGDEVÄGEN 18A  
168 66 BROMMA • SVERIGE  
SWEDEN  
TEL: +46 8 580 881 00  
FAX: +46 8 580 881 30

SAINT-GOBAIN INOVATIF MALZEMELER  
VE ASINDIRICI SAN. TIC. AS.  
ALTAYÇEŞME MAH. ÇAMLI SOK. NO:21  
ESAS OFISPARK KAT:9 34843  
MALTEPE, İSTANBUL • TURKEY  
TEL: 0090-216-217 12 50  
FAX: 0090-216-442 40 74

SAINT-GOBAIN ABRASIVES LTD.  
DOXEY RD

FAX: +36 1 371 22 55

FAX: +351 229 437 949

STAFFORD

ST16 1EA

UNITED KINGDOM

TEL: +44 1785 222 000

FAX: +44 1785 213 487



Saint-Gobain Abrasifs  
190 Rue J.F. Kennedy  
L-4930 Bascharage  
Grand Duche de Luxembourg  
Tel: +352 50 4011  
Fax: +331 83717792  
no. vert (France) 0800 906 903

[www.nortonabrasives.com/fr-fr](http://www.nortonabrasives.com/fr-fr)