

# CST 100/120 ALU

## OPERATING INSTRUCTIONS

Translation of the original instructions







# CE Déclaration of conformity

The undersigned manufacturer:

**SAINT - GOBAIN ABRASIVES S.A.**  
**190, BD. J. F. KENNEDY**  
**L-4930 BASCHARAGE**

Declares that this product:

Masonry saw:	<b>CST 100 115V – 350MM – 1.8 KW – 2800 RPM</b>	Code: <b>70184601937</b>
	<b>CST 100 230V – 350MM – 2.2 KW – 2800RPM</b>	<b>70184602016</b>
	<b>CST 120 115V – 350MM – 1.8 KW – 2800RPM</b>	<b>70184602124</b>
	<b>CST 120 230V – 350MM – 2.2KW – 2800 RPM</b>	<b>70184602125</b>

is in conformity with the following directives:

- **"MACHINES" 2006/42/CE**
- **"LOW VOLTAGE" 2014/35/UE**
- **"ELECTROMAGNETIC COMPATIBILITY" 2014/30/UE**
- **"NOISE" 2000/14/CE**

and the European standard

- **EN 12418 – Masonry and stone cutting-off machines - Safety**

Valid for machines with serial number from: 1609XXXXX

Storage location of the technical documents:

Saint-Gobain Abrasives 190, Bd. J. F. Kennedy 4930 BASCHARAGE, LUXEMBOURG

This declaration of conformity loses its validity when the product is converted or modified without agreement.

Bascharage, Luxembourg, 01/01/2016.

Olivier Plenert, executive officer.

A handwritten signature in black ink, appearing to read "Olivier Plenert".



# CST: OPERATING INSTRUCTIONS

## TABLE OF CONTENTS

<b><u>1</u></b>	<b><u>BASIC SAFETY INSTRUCTIONS.....</u></b>	<b><u>6</u></b>
1.1	<i>Symbols .....</i>	6
1.2	<i>Machine plate.....</i>	7
1.3	<i>Safety instructions for particular operating phases .....</i>	7
<b><u>2</u></b>	<b><u>MACHINE DESCRIPTION .....</u></b>	<b><u>8</u></b>
2.1	<i>Short description.....</i>	8
2.2	<i>Purpose of use .....</i>	8
2.3	<i>Layout .....</i>	8
2.4	<i>Technical data.....</i>	10
2.5	<i>Statement regarding the vibration emission .....</i>	11
2.6	<i>Statement regarding noise emission.....</i>	12
<b><u>3</u></b>	<b><u>ASSEMBLY AND COMMISSIONING .....</u></b>	<b><u>13</u></b>
3.1	<i>Tool assembly .....</i>	13
3.2	<i>Feet mounting.....</i>	13
3.3	<i>Electrical connections.....</i>	13
3.4	<i>Starting the machine.....</i>	13
3.5	<i>Water cooling system .....</i>	14
<b><u>4</u></b>	<b><u>TRANSPORT AND STOCKING.....</u></b>	<b><u>15</u></b>
4.1	<i>Securing for transport.....</i>	15
4.2	<i>Transport procedure .....</i>	15
4.3	<i>Long period of inactivity .....</i>	15
<b><u>5</u></b>	<b><u>OPERATING THE MACHINE .....</u></b>	<b><u>16</u></b>
5.1	<i>Site of work.....</i>	16
5.2	<i>Cutting material .....</i>	16
5.3	<i>General advice for the cutting .....</i>	17
<b><u>6</u></b>	<b><u>MAINTENANCE AND SERVICING.....</u></b>	<b><u>18</u></b>
<b><u>7</u></b>	<b><u>FAULTS: CAUSES AND CURES .....</u></b>	<b><u>19</u></b>
7.1	<i>Fault-finding procedures.....</i>	19
7.2	<i>Trouble-shooting guide.....</i>	19
7.3	<i>Circuit diagram.....</i>	20
7.4	<i>Customer service.....</i>	22

# 1 BASIC SAFETY INSTRUCTIONS

The CST is exclusively designed for the cutting of abrasive materials with NORTON diamond blades, mainly on construction sites.

Uses other than the manufacturer's instructions shall be considered as contravening the regulations. The manufacturer shall not be held responsible for any resulting damage. Any risk shall be borne entirely by the user. Observing the operating instructions and compliance with inspection and servicing requirements shall also be considered as included under use in accordance with the regulations.

## 1.1 Symbols

Important warnings and pieces of advice are indicated on the machine using symbols. The following symbols are used on the machine:



Read operator's instructions



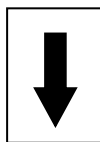
Ear protection must be worn



Hand protection must be worn



Eye protection shall be worn



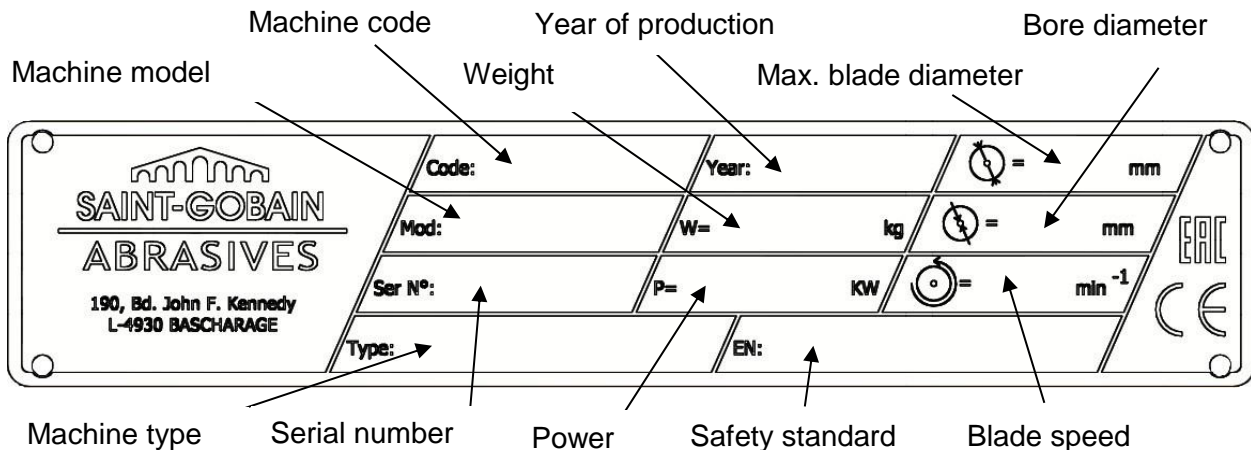
Rotation direction of the blade



Danger: risk of cut

## 1.2 Machine plate

Important data can be found on the following plate located on the machine:



## 1.3 Safety instructions for particular operating phases

### Before commencing work

- Before commencing work, make yourself familiar with the working environment at the place of use. The working environment includes: obstacles in the area of work and manoeuvre, the firmness of the floor, necessary protection at the site relating to public thoroughfares and the availability of help in the event of accidents.
- Install the machine balanced on a flat and stable ground.
- Check for correct mounting of the blade regularly.
- Immediately remove damaged or badly worn blades, as they endanger the operator whilst rotating.
- Only fit NORTON diamond blades to the machine! The use of other tools can damage the machine!
- Firmly press the part to be cut against the machine abutting to prevent it from moving during cutting operation.
- Use the machine only with closed and fixed blade guard.
- Please use dust mask during dry cutting to minimize the dust effects.
- Check carefully the documentation about diamond blades to find the one who best meet the requirement with your application.

### Machine with electric motor

- Turn off the power of the CST and disconnect it from the network before any work on the machine itself.
- Avoid contact of electrical connections with water projections or moisture.
- The CST must be absolutely correctly grounded. In case of doubt, have the electrical connections checked by a qualified electrician.
- Turn off the CST main power supply if it stops with no apparent reason. Only a qualified electrician is authorized to investigate and resolve the issue.
- To shut down the machine in case of danger, push the red button on the switch.

## 2 MACHINE DESCRIPTION

Any modification, which could lead to a change in the original characteristics of the machine, may be done only by Saint-Gobain Abrasives who shall confirm that the machine is still in conformity with the safety regulations.

### 2.1 Short description

CST type Masonry saw is a machine with fixed table and mobile head. Robust and powerful, it allows precise cuts in a wide variety of building materials. It can be used on construction and also on industrial sites. Combined with NORTON diamond blades, it offers a high degree of performance and cutting quality for large tiles, window sills or stair steps.

### 2.2 Purpose of use

The machine is designed for wet cutting of a large range of building and refractory materials, or tiles. **It is not designed for cutting wood or metals.**

### 2.3 Layout





**Frame (1)**

Jig-welded steel construction, the frame is robust and resistant. The side posts of the machine ensure that the rail is parallel to the table. The rails (4) assembly can also be tilted to 45° to make bevel cuts. The rail (2) guides the cutting head over the table.

**Blade guard (3)**

Jig-welded steel construction with 350mm-diameter blade capacity, which offers maximum operator protection and increased visibility of the work piece.

Incorporated in the blade guard is an outer metal cover, which can be easily hinged open. This allows easy access to shaft for inspection and blade replacement when motor is switched off, while fully protecting the blade when in operation. An arrow on the blade guard indicates the direction of the blade rotation.

**Emergency stop button (5)**

The red button stops the motor. It is also an emergency stop button.

**2.4 Technical data**

Code	70184601937	70184602016	70184602124	70184602125
Description	CST 100 ALU 230V	CST 120 ALU 230V	CST 100 ALU 115V	CST 120 ALU 115V
Power	2,2 kW		1.8 kW	
Voltage	230V 1~		115V 1~	
Motor protection	IP 54			
Sound pressure level	73,5 dB (A) (refer to ISO EN 11201)			
Sound energy level	88,5 dB (A) (refer to ISO EN 3744)			
Cutting length	1000 mm	1200 mm	1000 mm	1200 mm
Max. Cutting depth	110 mm			
Blade speed (RPM)	2800 min <sup>-1</sup>			
Blade diameter	350mm			
Blade bore	25.4 mm			
Flanges diameter	110 mm			
Length	1270 mm	1600 mm	1270 mm	1600 mm
Width	660 mm			
Height (with feet)	1350 mm			
Height (without feet)	780 mm			
Water pan capacity	62 L	71 L	62 L	71 L
Weight (total)	72 kg	79 kg	72 kg	79 kg

## 2.5 Statement regarding the vibration emission

Declared value of vibration emission following **EN 12096**.

Machines Modèle / code	Measured value of vibration emission at m/s <sup>2</sup>	Uncertainty K m/s <sup>2</sup>	Tool used Model / code
<b>CST 100 ALU 230V / 70184601937</b> <b>CST 100 ALU 115V / 70184602124</b> <b>CST 120 ALU 230V / 70184602016</b> <b>CST 120 ALU 115V / 70184602125</b>	<b>&lt;2.5</b>	0.5	Duo Granit

- The vibration value is lower and does not exceed 2.5 m / s.
- Values determined using the procedure described in the standard **EN 12418**.
- The measurements are made with new machines. Actual values may vary with site conditions, in terms of:
  - Materials worked
  - Wear Machine
  - Lack of maintenance
  - Inappropriate tool for application
  - Tool in poor condition
  - Unskilled operator
  - Etc...
- The exposure time to vibration is based on the performance of work (related to the adequacy Machine / Tool / worked material / operator)

When evaluating risks due to hand-arm vibration, you need to take into account effective usage at rated power of machine during a full day of work; quite often you will realise that effective utilisation time represents around 50% of overall duration of work. You have to consider, of course, breaks, water feeding, preparation of work, time to move the machine, disk mounting...

## 2.6 Statement regarding noise emission

Declared value of noise emission following **EN ISO 11201** and **NF EN ISO 3744**.

Machine Modèle / code	Sound Pressure level $L_{P_{eq}}$ EN ISO 11201	Uncertainty K (Sound Pressure level $L_{P_{eq}}$ EN ISO 11201)	Sound power level $L_{W_{eq}}$ NF EN ISO 3744	Uncertainty K (Sound power level $L_{W_{eq}}$ NF EN ISO 3744)
<b>CST 100 ALU 230V / 70184601937</b> <b>CST 100 ALU 115V / 70184602124</b> <b>CST 120 ALU 230V / 70184602016</b> <b>CST 120 ALU 115V / 70184602125</b>	73.5 dB(A)	2.5 dB(A)	88.5 dB(A)	4 dB(A)

- Values determined using the procedure described in the standard **EN 12418**.
- The measurements are made with new machines. Actual values may vary with site conditions, in terms of:
  - Wear Machine
  - Lack of maintenance
  - Inappropriate tool for application
  - Tool in poor condition
  - Unskilled operator
  - Etc...
- Measured values relate to an operator in normal use, as described in the manual position.

### 3 ASSEMBLY AND COMMISSIONING

The machine is delivered fully equipped. It is ready for operation when you mount the diamond blade, the handles and the conveyor cart and after you connect to the appropriate power supply.

#### 3.1 Tool assembly

Only NORTON blades should be used.

All tools used must be selected with regard to their maximum permitted cutting speed for the machine's maximum permitted rotation speed. Before mounting a new blade into the machine, switch off the machine and isolate it from the main source of electricity.

To mount a new blade, follow these steps:

- Loosen the screw in front of the blade guard and disconnect the water hose on its the left side and open it.
- Loosen the hexagonal nut on the blade shaft (**attention:** left threaded), which holds the removable outer flange, with the supplied wrench.
- Remove the outer flange.
- Clean the flanges and blade shaft and inspect for wear.
- Mount the blade on arbour ensuring that direction of rotation is correct. Wrong direction of rotation blunts the blade quickly.
- Replace outer blade flange.
- Tighten the hexagonal (**attention:** left threaded), nut with the supplied wrench.
- Close the blade guard, retighten the screw on the front of the blade guard and reconnect the water hose.

**ATTENTION:** The blade bore must correspond exactly to the diameter of the blade shaft. Cracked or damaged bore is dangerous for the operator and for the machine.

#### 3.2 Feet mounting

Use the provided screws to mount the feet on the frame.

#### 3.3 Electrical connections

Check that,

- The voltage/phase supply corresponds to the information indicated on the motor plate.
- Available power supply must have ground connection in conformity with safety regulations.
- The connecting cables should have at least a 2.5mm<sup>2</sup>-section per phase.

#### 3.4 Starting the machine

Press the green button to start the machine. Press the red one to stop it. The red button is also an emergency stop button.

**400V Motor: Direction of rotation**

The direction of rotation is indicated on the blade guard. If the direction of rotation does not correspond to the direction shown by the arrow, then reverse the motor polarity by turning the phase inverter inside the male plug with a screwdriver.

**3.5 Water cooling system**

- Fill the water pan with clean water to approximately 1cm from top (ensure that bottom of pump is fully immersed in water).
- Open water-tap at blade guard (note that handle on water-tap should be in line with water-flow).
- Ensure that water is flowing freely in the circuit and is delivered adequately to both sides of the blade, as insufficient water supply may result in premature failure of the diamond blade.
- The water pump must never run without water. Always make sure that there is enough water in the pan and refill if necessary.
- In case of frost, empty the water cooling system from its water.

## **4 TRANSPORT AND STOCKING**

### ***4.1 Securing for transport***

Before transporting or lifting the machine, always remove the blade and empty the water pan. Also lock the cutting head on the rail. To do so, move the head in the middle of the rail and tighten the knob screw until the cutting head is secured on the rail.

### ***4.2 Transport procedure***

Conform yourself to work regulations, in order to transport the machine safely. The machine is fitted with 4 foldable handles. Fold these out of the machine to transport it easily.

The machine is designed to be raised using a crane with hooks of lifting on the corners. The machine can also be transported by a forklift truck while passing the forks under the water vat.

### ***4.3 Long period of inactivity***

If the machine is not going to be used for a long period, please take the following measures:

- Completely clean the machine
- Empty the water system
- Take the water pump out of the slurry and clean it thoroughly.

The storage site must be clean, dry and at a constant temperature.

## 5 OPERATING THE MACHINE

In this part, you will find some safety tips to use the machine.

### 5.1 Site of work

#### 5.1.1 Sitting the machine

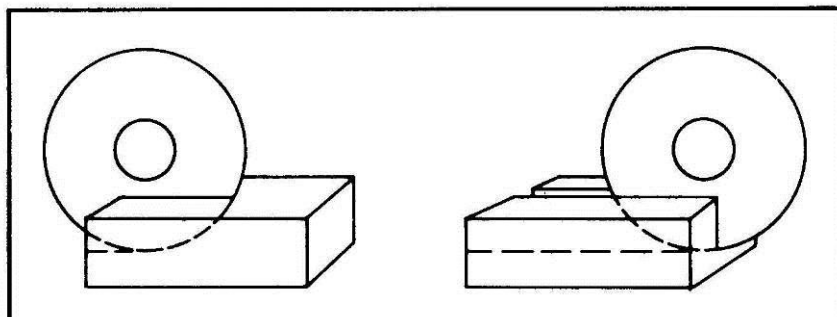
- Remove from the site anything, which might hinder the working procedure!
- Make sure the site is sufficiently well lit!
- Observe manufacturer's conditions for connecting to power supplies!
- Place electric cables in such a way that damage by the device is excluded!
- Make sure you have a continual adequate view of the working area so you can intervene in the working process at any time!
- Keep other staff out of the area, so you can work securely.

#### 5.1.2 Space required for operation and maintenance

Leave 2 m around the machine for usage and maintenance of the CST.

### 5.2 Cutting material

To use the CST correctly, you must face it with one hand on one of the 3 handles of the cutting head, and the other ready to shut the machine down in case of emergency. Always keep your hands away from the moving blade.



In full depth or fixed cutting, the cutting head is locked in a fixed position and the material is pushed into it as shown.

- Lower the cutting head thanks to the hand wheel to the desired cutting depth. In “through cutting”, lower cutting head until blade periphery reaches max. 3mm under the surface of the conveyor cart (for maximal cutting depth).
- Put the material on the table and maintain it firmly against the butting. (or the cutting guide when appropriate).
- Pull the cutting head slowly and without undue pressure towards the material.
- You can tilt the head for bevel cuts. For this purpose, untighten the two black buttons on each side of the frame, and tilt the head to the desired position (from 0 to 45°). Tighten then the two buttons.
- To cut thicker materials, you can cut a first side, and then reverse it to cut the total depth. You can cut materials until 220mm depth. (370mm for the 500mm blade versions).



### 5.3 General advice for the cutting

- The CST is designed to cut materials with maximal dimensions of :

Modèle	CST 120 ALU 115V	CST 120 ALU 230V	CST 100 ALU 115V	CST 100 ALU 230V
∅ disque	350 mm	350 mm	350 mm	350 mm
Dimensions des pièces à couper (L x l x h)	1200 x660 x120	1200 x660 x120	1000 x660 x120	1000 x660 x120
Poids maximal des pièces à couper	80 kg	80 kg	66 kg	66 kg

- The width of the table and of the material can be increased by adding a table extension.
- Before commencing work make sure tools are firmly seated!
- Select the right tools as recommended by the manufacturer depending on the material to be worked, the working procedure (wet cut) to be carried out and the required efficiency.
- Apply cooling water continuously whilst cutting and in good time! Make sure the water pan contains enough water.
- When dry cutting, ensure sufficient dust extraction and wear a dusk protection mask!
- If the thermal protection trips, allow the thermal protection to cool down. Wait a few minutes to allow the motor to cool down before restarting the machine.

## 6 MAINTENANCE AND SERVICING

To ensure a long-term quality from the cutting with the CST, please follow the maintenance plan below:

		Begin of the day	During the changing of tool	End of the day or more often if required	Every week	After a fault	After a damage
Whole machine	Visual control (general aspect, watertightness)						
	Clean						
Flange and blade fixing devices	Clean						
Motor cooling fans	Clean						
Water pump	Clean						
Water pan	Clean						
Cutting table	Clean						
Water hoses and nozzles	Clean						
Water pump filter	Clean						
Rail	Clean						
Motor housing	Clean						
Reachable nuts and screws	Tighten up						

### Maintenance of the motor

Always perform the maintenance of the motor with the machine isolated from the electrical supply.

### Cleaning of the machine

Your machine will last longer if you clean it thoroughly after each day of work, especially water pump, water pan, cutting head rail, motor and blade flange. To easily clean the water pan, open the table. Always clean the machine when any cutting dust and debris is still fresh; never allow the deposits to solidify.

### Lubrication

The CST uses life-lubricated bearings. Therefore, you don't need to lubricate the machine at all.

## 7 FAULTS: CAUSES AND CURES

### 7.1 Fault-finding procedures

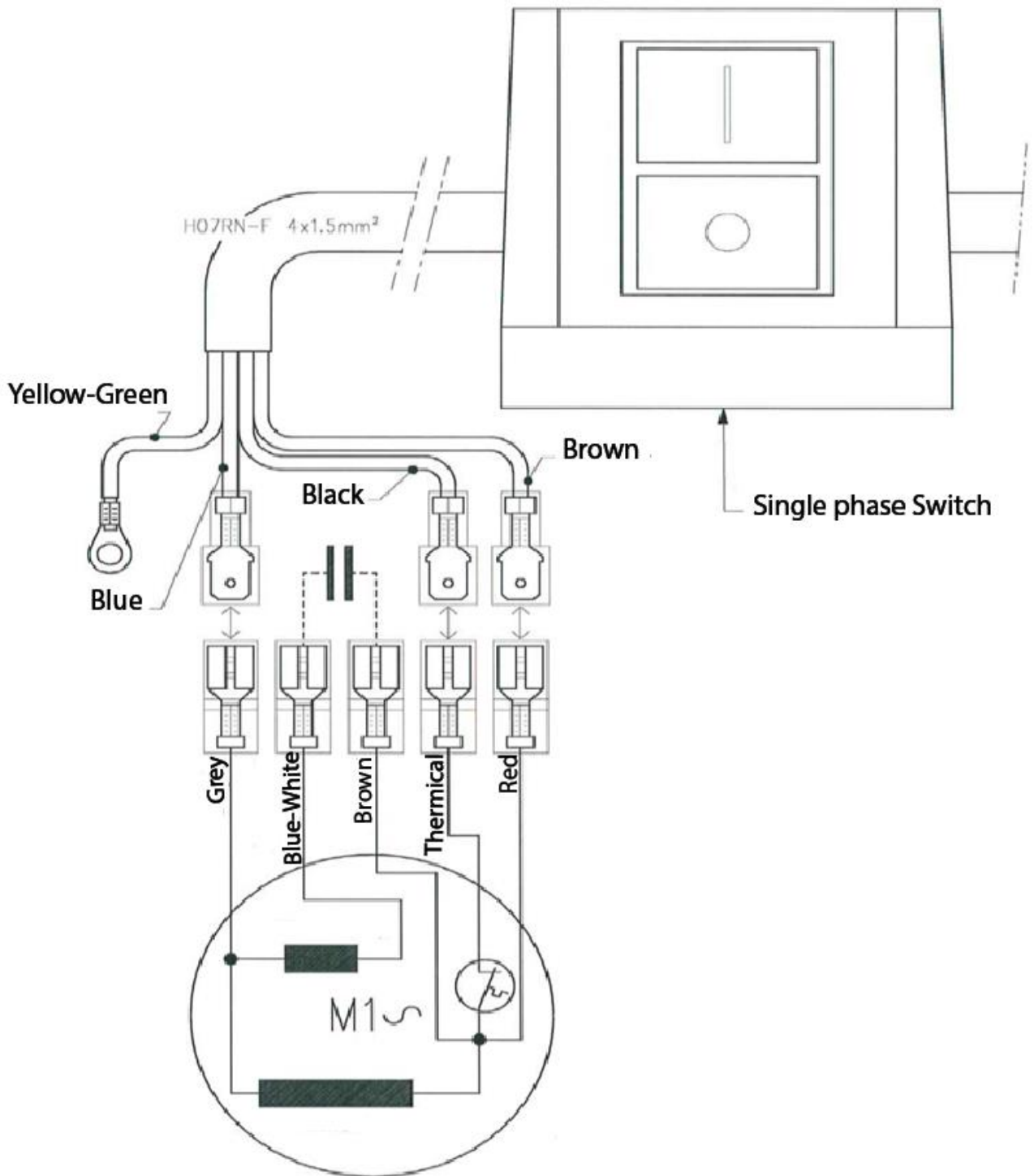
Should any fault occur during the use of the machine, turn it off, and isolate it from the electrical supply. Any works dealing with the electrical system or supply of the machine can only be carried out by a qualified electrician.

### 7.2 Trouble-shooting guide

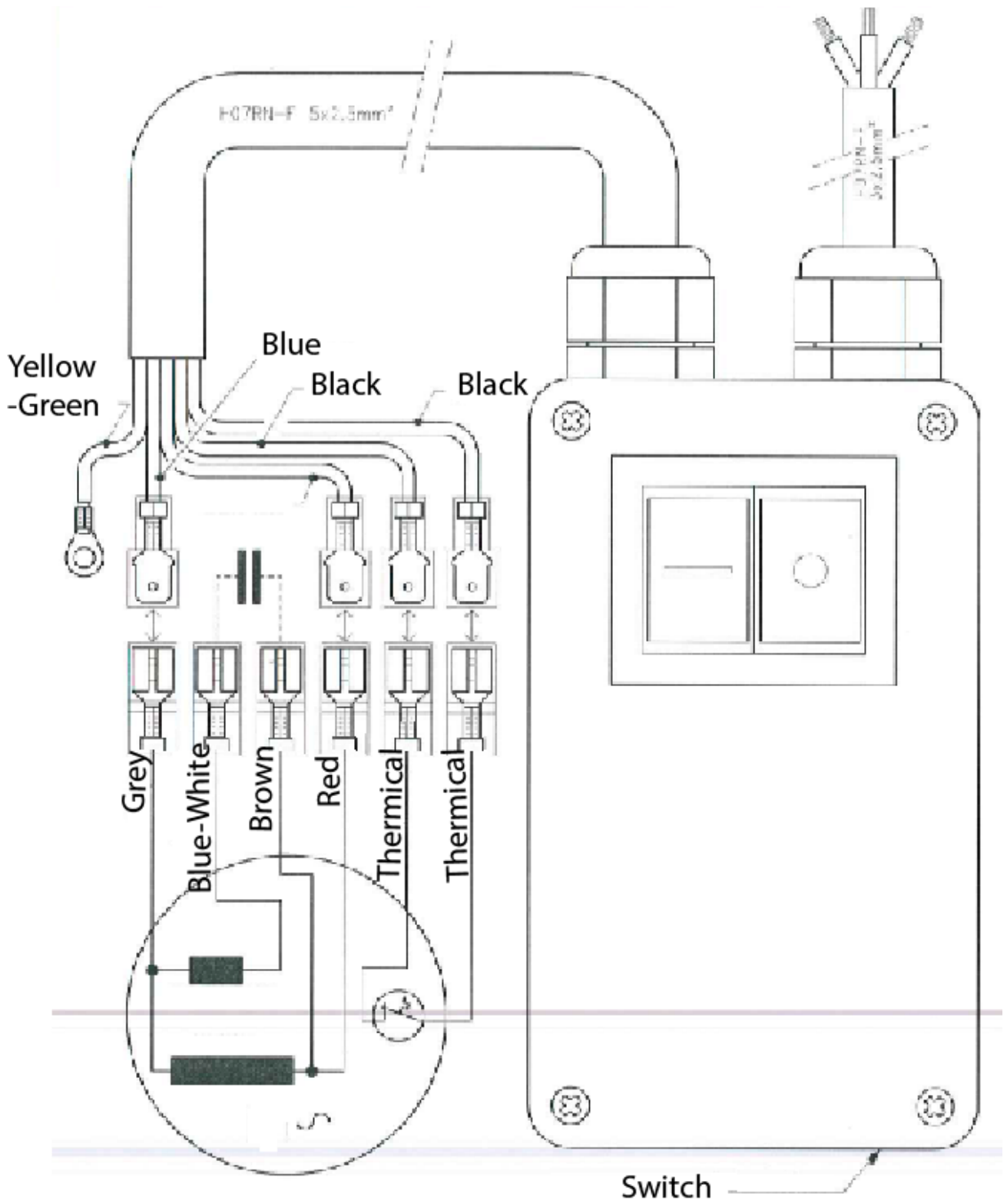
Trouble	Possible source	Resolution
Motor is not running	No electricity	Check the electrical supply (fuse for example)
	Connection cable section too small	Change connection cable
	Defective connection cable	Change connection cable
	Defective switch	CAUTION : can only be solved by qualified electrician
	Defective motor	Change motor or contact motor manufacturer
Motor stops during the cutting, but can be restarted after a short period (overload protection)	Cutting advance too quick	Cut slowly
	Blade is blunt or glazed	Sharpen the blade in calcareous stone
	Defective blade	Change blade
	Wrong blade specification for the application	Change blade
No water on the blade	Not enough water in the pan	Refill the water pan
	Water tap is closed	Open tap on blade guard
	Water supply system is blocked up	Clean water supply system
	Water pump is not working	Change the pump

### 7.3 Circuit diagram

#### 230V Motor



### 115V Single phase Motor



## **7.4 Customer service**

When ordering spare parts, please mention:

- The serial number (seven digits).
- The code of the part.
- The exact denomination.
- The number of parts required.
- The delivery address.
- Please indicate clearly the means of transportation required such as "express" or "by air". Without specific instructions, we will forward the parts through the means which seem appropriate to us --- but which is not always the quickest way.

Clear instructions will avoid problems and faulty deliveries.

If not sure, please send us the defective part.

In the case of a warranty claim, the part must always be returned for evaluation.

Spare parts for the motor can be ordered with the manufacturer of the motor or with their dealer, which is often quicker and cheaper.

This machine has been manufactured by Saint-Gobain Abrasives S.A.

190, Bd J.F.Kennedy  
L- 4930 BASCHARAGE  
Grand-Duché de Luxembourg.  
Tel. : 00352-50 401-1  
Fax : 00352- 50 16 33

Guarantee can be claimed and technical support obtained from your local distributor where machines, spare parts and consumables can be ordered as well:

SAINT-GOBAIN ABRASIVES NV/SA  
INDUSTRIELAAN 129  
1070 ANDERLECHT/BRUSSEL  
BELGIUM  
TEL: +32 (0)2 267 21 00  
FAX: +32 (0)2 267 84 24

SAINT-GOBAIN ABRASIVES, S.R.O.  
POČERNICKÁ 272/96, MALEŠICE  
108 00 PRAHA 10  
CZECH REPUBLIC  
TEL: +420 255 719 326  
FAX: +420 255 719 321

SAINT-GOBAIN ABRASIVES A/S  
ROBERT JACOBSENS VEJ 62A  
2300 KØBENHAVN S  
DENMARK  
TEL: +45 4675 5244

PO BOX 643706  
FORTUNE TOWER OFFICE 2106  
JLT BLOCK C  
(NEXT TO METRO STATION)  
JUMEIRA LAKE TOWER, DUBAI  
UNITED ARAB EMIRATES  
TEL: +971 4 431 5154  
FAX: +971 4 431 5434

SAINT-GOBAIN ABRASIFS  
RUE DE L'AMBASSADEUR - B.P.8  
78 702 CONFLANS CEDEX  
FRANCE  
TEL: +33 (0)1 34 90 40 00  
FAX: +33 (0)1 39 19 89 56

SAINT-GOBAIN ABRASIVES GMBH  
BIRKENSTRASSE 45-49  
D-50389 WESSELING  
GERMANY  
TEL: +49 (0) 2236 703-1  
+49 (0) 2236 8996-0  
+49 (0) 2236 8911-0  
FAX: +49 (0) 2236 703-367  
+49 (0) 2236 8996-10  
+49 (0) 2236 8911-30

FÜR DEN FACHHANDEL  
ÖSTERREICH  
TEL: +43 (00) 662 430 076

SAINT-GOBAIN ABRASIVES KFT.  
1225 BUDAPEST  
BÁNYALÉG U. 60/B.  
HUNGARY  
TEL: +36 1 371 22 50  
FAX: +36 1 371 22 55

SAINT-GOBAIN ABRASIVI S.P.A  
VIA PER CESANO BOSCONI 4  
I-20094 CORSICO MILANO  
ITALY  
TEL: +39 02 44 851  
FAX: +39 02 44 78 266

SAINT-GOBAIN ABRASIVES S.A.  
190 RUE J.F. KENNEDY  
L-4930 BASCHARAGE  
GRAND DUCHE DE LUXEMBOURG  
TEL: +352 50 401 1  
FAX: +352 50 16 33  
NO. VERT (FRANCE) 0800 906 903

SAINT-GOBAIN ABRASIFS, S.A.  
2 ALLÉE DES FIGUIERS  
AIN SEBAË - CASABLANCA  
MOROCCO  
TEL: +212 5 22 66 57 31  
FAX: +212 5 22 35 09 65

SAINT-GOBAIN ABRASIVES BV  
GROENLOSEWEG 28  
7151 HW EIBERGEN  
P.O. BOX 10  
7150 AA EIBERGEN  
THE NETHERLANDS  
TEL: +31 545 466466  
FAX: +31 545 474605

SAINT-GOBAIN ABRASIVES AS  
POSTBOKS 11, ALNABRU,  
0614 OSLO  
BROBEKKVEIEN 84,  
0582 OSLO  
NORWAY  
TEL: +47 63 87 06 00  
FAX: +47 63 87 06 01

SAINT-GOBAIN HPM POLSKA SP. Z O.O.  
UL. NORTON 1  
62-600 KOŁO  
POLAND  
TEL: +48 63 26 17 100  
FAX: +48 63 27 20 401

SAINT-GOBAIN ABRASIVOS, L. DA  
ZONA INDUSTRIAL DA MAIA  
I-SECTOR VIII, NO. 122  
APARTADO 6050  
4476 - 908 MAIA  
PORTUGAL  
TEL: +351 229 437 940  
FAX: +351 229 437 949

SAINT-GOBAIN GLASS  
BUSINESS UNIT ABRASIVI  
PUNCT DE LUCRU: LOC.VETIS, JUD.  
SATU MARE 447355  
STR. CAREIULUI 11  
PARC INDUSTRIAL RENOVATIO  
ROMANIA  
TEL: 0040-261-839.709  
FAX: 0040-261-839.710

SG HPM RUS  
58, F. ENGELS STR.  
STROENIE 2  
105082 MOSCOW  
RUSSIA  
TEL: +74 955 408 355  
FAX: +74 959 373 224

SAINT-GOBAIN  
ABRASIVES (PTY) LTD  
2 MONTEER ROAD  
ISANDO 1600  
P.O. BOX 67  
SOUTH AFRICA  
TEL: +27 11 961 2000  
FAX: +27 11 961 2184/5

SAINT-GOBAIN ABRASIVOS, S.A.  
CTRA. DE GUIPÚZCOA, KM. 7,5  
E-31195 BERRIOPLANO (NAVARRA)  
SPAIN  
TEL: +34 948 306 000  
FAX: +34 948 306 042

SAINT-GOBAIN ABRASIVES AB  
BOX 495  
SE-191 24 SOLLENTUNA  
SWEDEN  
TEL: +46 8 580 881 00  
FAX: +46 8 580 881 01

SAINT-GOBAIN INOVATIF  
MALZEMELER VE AŞINDIRICI  
SAN. TIC. A.Ş.  
GOLD PLAZA, ALTAY ÇEŞME  
MAHALLESİ, ÖZ SOKAK, NO:19/16  
34843 MALTEPE-ISTANBUL,  
TURKEY  
TEL: 0090-216-217 12 50  
FAX: 0090-216-442 40 74

SAINT-GOBAIN ABRASIVES LTD.  
DOXEY RD  
STAFFORD  
ST16 1EA  
UNITED KINGDOM  
TEL: +44 1785 222 000  
FAX: +44 1785 213 487

[www.construction.norton.eu](http://www.construction.norton.eu)

**Saint-Gobain Abrasives**

190, Bd. J. F. Kennedy  
L-4930 BASCHARAGE  
LUXEMBOURG

Tel: ++352 50401-1

Fax: ++352 501633

e-mail: [sales.nlx@saint-gobain.com](mailto:sales.nlx@saint-gobain.com)