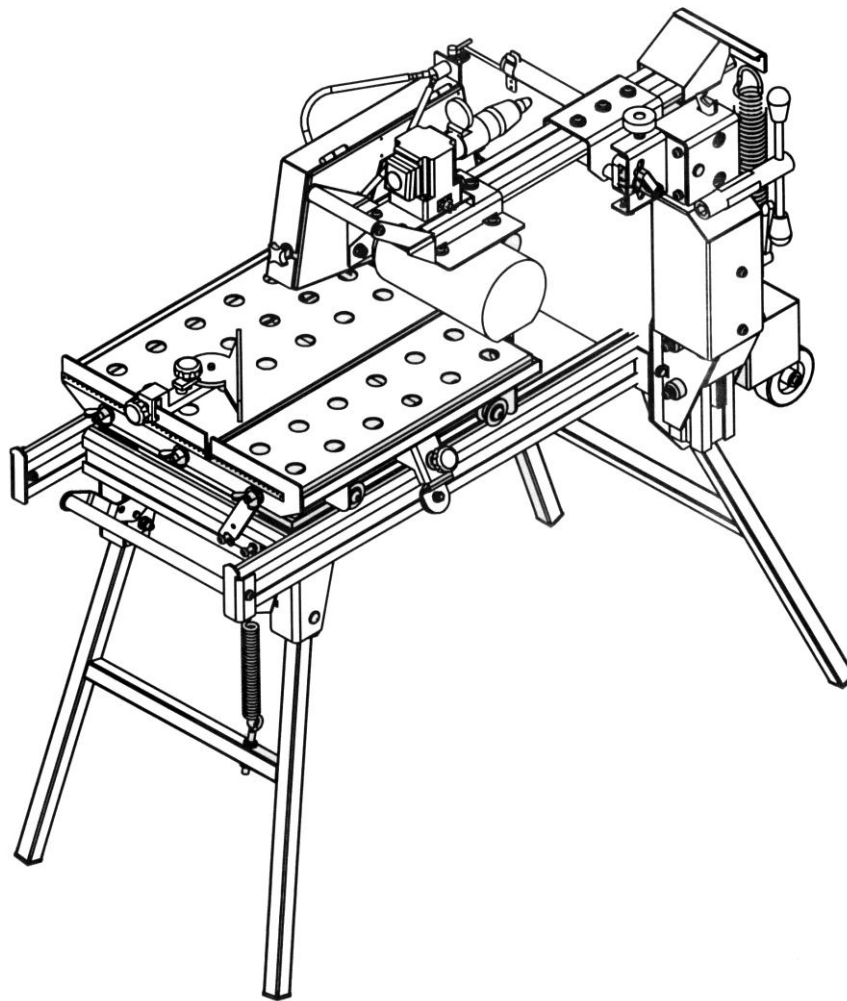


# CHW-T

SPARE PARTS LIST



**NORTON**  
SAINT-GOBAIN®

**clipper®**



# CHW-T

## 1 Accessories

Code	Description
00310007579	Lateral extension for extra wide materials

## 2 Spare parts list

POS.	PAGE	ART.NUMB.	DENOMINATION	TYPE (*)	REMARKS
1	EC01	00310007280	Rail 500	W	70184610056, 70184610067
		00310007281	Rail 600	W	70184610057, 70184610068, 70184620129
2	EC01	00310007282	Front right corner cpl.	S	
3	EC01	00310007283	Front left corner cpl.	S	
4	EC01	00310007284	Rear left corner cpl.	S	
5	EC01	00310007285	Rear right corner cpl.	S	
6	EC01	00310007286	Cart stop front left	S	
7	EC01	00310007287	Cart stop front right	S	
8	EC01	00310007288	Rear foot	S	
9	EC01	00310007289	Front foot	S	
10	EC01	00310002114	Spring foot	S	
11	EC01	00310007290	Front handle cpl.	S	
12	EC01	00310007291	Rear handle cpl.	S	
13	EC01	00310005496	Transport wheel	W	
14	EC01	00310007292	Water tray	S	
15	EC01	00310007293	Pump tank	S	
16	EC01	00310004776	Drain plug	S	
17	EC02	00310007295	Upper arm console	S	
18	EC02	00310006528	Blocking handgrip	S	
19	EC02	00310004053	Spanner 19	S	
21	EC02	00310002252	Spring for head	S	
22	EC02	00310007583	Head stops cpl.	S	
24	EC03	00310007299	Motor holder cpl.	S	
25	EC03	00310007300	Machine handle	S	
26	EC03	00310007301	Head profil	S	
27	EC03	00310007302	Head pivot	S	
28	EC03	00310007303	Spring console	S	
29	EC03	00310007304	Curtain holder	S	
30	EC03	00310007305	Blade guard cpl.	S	70184610056, 70184610057, 70184620129
		00310007395	Blade guard S.l. cpl.	S	70184610067, 70184610068
31	EC03	00310007306	Guard flap	W	
32	EC03	00310002235	Water nozzles	W	
33	EC03	00310004233	Y distributor	W	
34	EC03	00310004262	Water tap	W	
35	EC03	00310005605	Guard knob	S	
36	EC03	00310007307	Curtain	W	
37	EC03	00310002069	Water Hose	W	
38	EC03	00310004389	Water pump 230V	W	70184610056, 70184610067, 70184610057, 70184610068
		00310005623	Water pump 115V	W	70184620129
39	EC03	00310004346	Electrical Motor 230V	S	70184610056, 70184610067, 70184610057, 70184610068

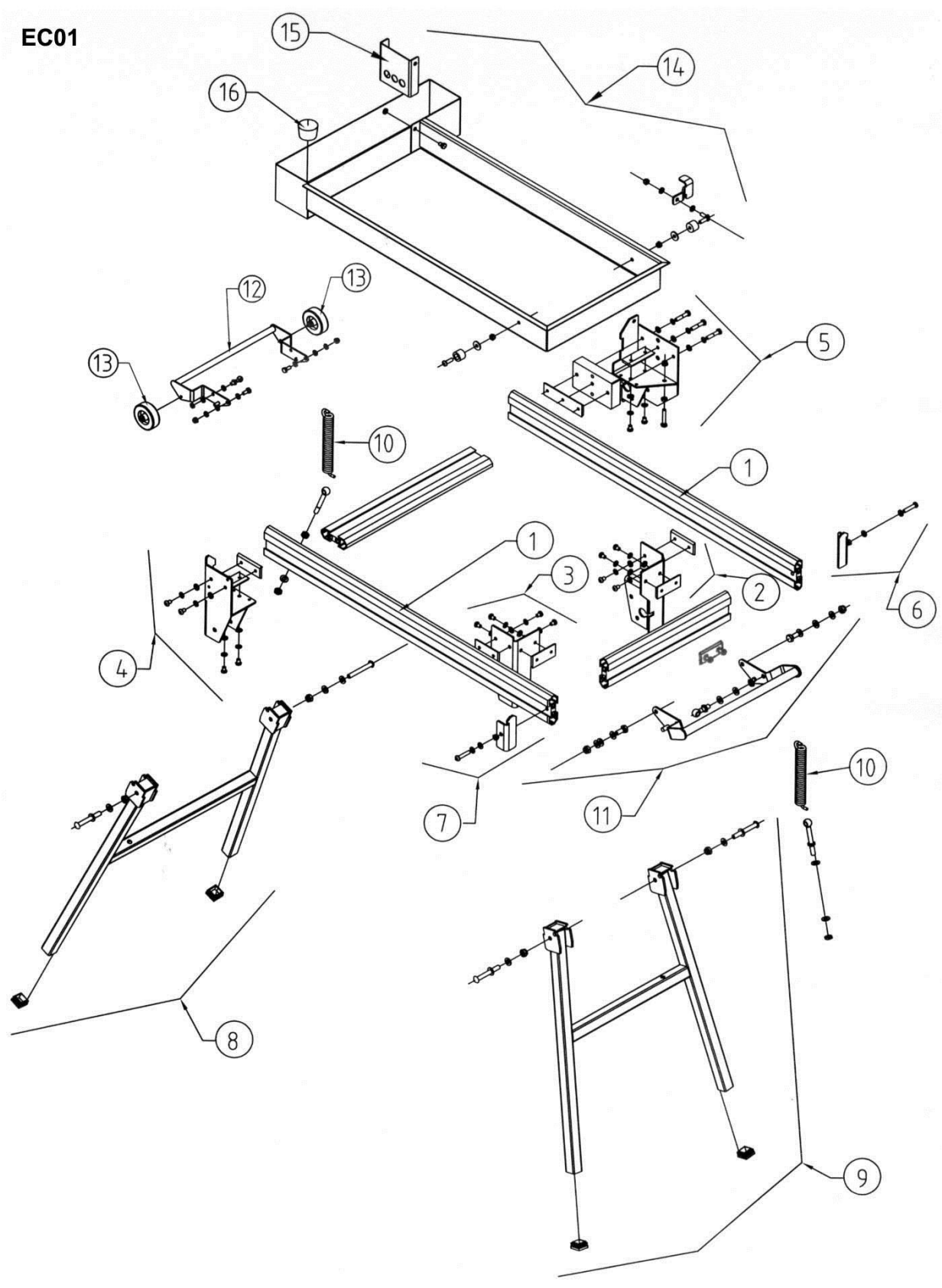
		00310004354	Electrical Motor 115V	S	70184620129
40	EC03	00310004330	Capacitor 230V	S	70184610056, 70184610067, 70184610057, 70184610068
		00310004362	Capacitor 115V	S	70184620129
41	EC03	00310004393	Nut, blade shaft	S	
42	EC03	00310004394	Outside collar	S	
43	EC03	00310004395	Inside collar	S	
44	EC03	00310007308	Switch cpl. 230V	W	70184610056, 70184610067, 70184610057, 70184610068
		00310007316	Switch cpl. 115V	W	70184620129
45	EC03	00310004392	Socket	W	
46	EC03	00310007309	Switch console cpl.	S	
48	EC04	00310007310	Conveyor cart cpl.	S	
49	EC04	00310007311	Cart extension 600mm	S	70184610057, 70184610068, 70184620129
50	EC04	00310007312	Cart wheel (set of 4)	W	
51	EC04	00310007313	Water collector	S	
52	EC04	00310002143	Scale	S	
53	EC04	00310007314	Back stop	W	
54	EC04	00310005685	Guide a cut	W	
55	EC04	00310007368	Anti-tipping device cpl.	S	
56	EC04	00310007369	Cart blocking device	S	
57	EC04	00310007315	Blocking knob	S	
58	EC04	00310002332	Anti-tipping sheave cpl.	W	
59	EC03	00310005129	Wear ring (set of 2)	W	
60	EC04	00310007394	Cart handle	S	70184610067, 70184610068
61	EC03	00310007396	Protection blade	S	70184610067, 70184610068
62	EC02	00310007491	Handle cpl.	S	
63	EC02	00310004778	Handle fixing spring	S	
64	EC02	00310005984	Guide	W	
65	EC02	00310005502	Wear ring	W	
66	EC02	00310007797	Pinion	W	
67	EC02	00310301946	Pinion/rack rail assy.	W	
68	EC02	00310007584	Rack rail	W	
69	EC02	00310007585	Tilting console	S	
70	EC02	00310007586	Down arm	S	
71	EC02	00310007587	Upper arm support	S	
72	EC02	00310007588	Pivot axle	W	
73	EC02	00310007589	Upper arm cpl.	S	
74	EC02	00310007590	Axle console	S	
75	EC02	00310007591	Protecting plate	S	
76	EC02		Pivot axle assy	W	
77	EC02		Locking axle assy	W	
78	EC02	00310005230	Stop adjusting knob	S	

(\*): S = Spare part, W = Wear part

Wear parts are worn out through normal use of the machine. The wear period depends a lot on the intensity of use of the machine. Wear parts must be serviced, used and eventually changed following the indications of the manufacturer. Any wear due to normal use of the machine will not be considered as a case of warranty. Genuine Clipper replacement parts should always be used.

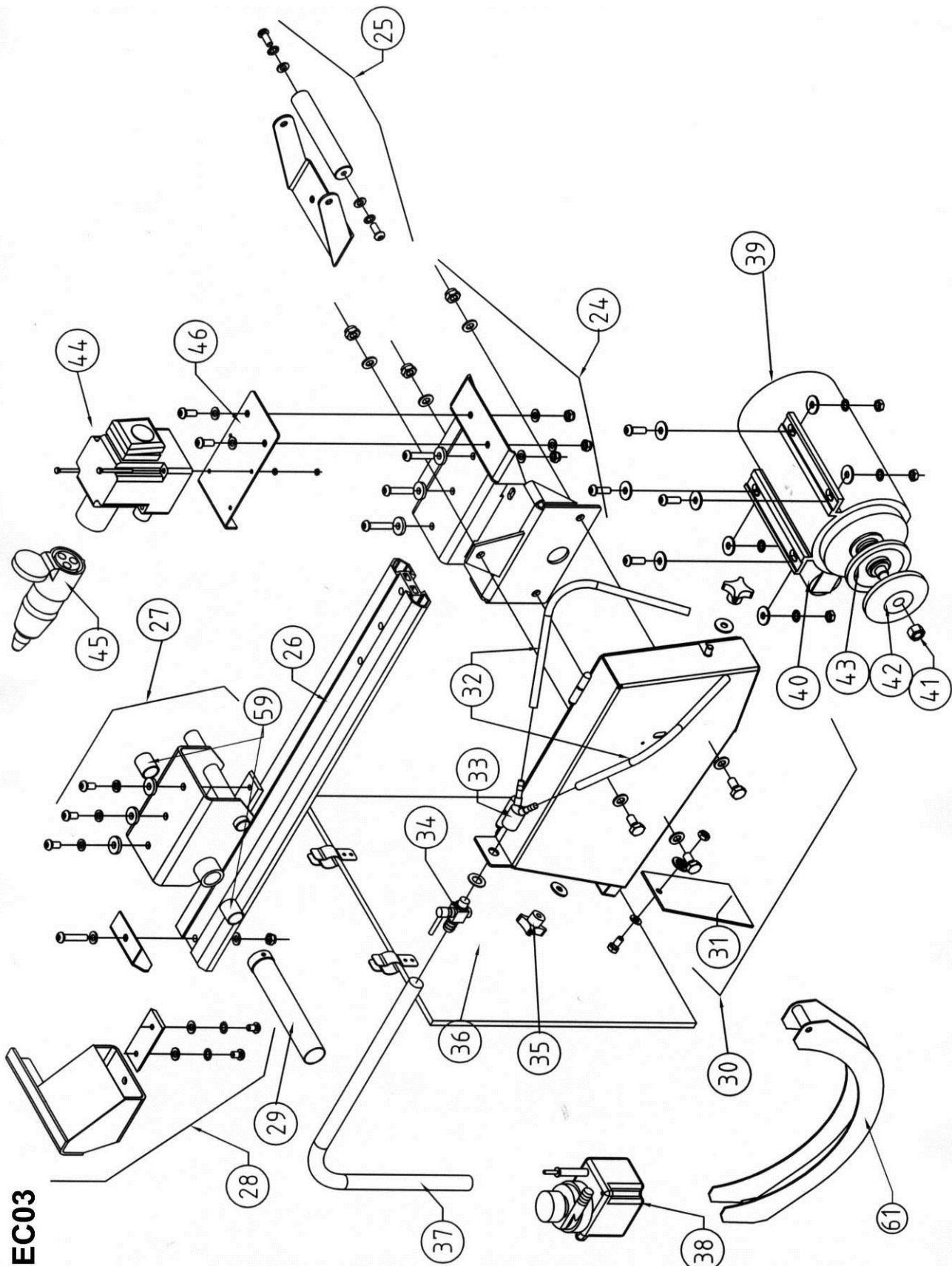
### 3 Exploded parts drawings

EC01

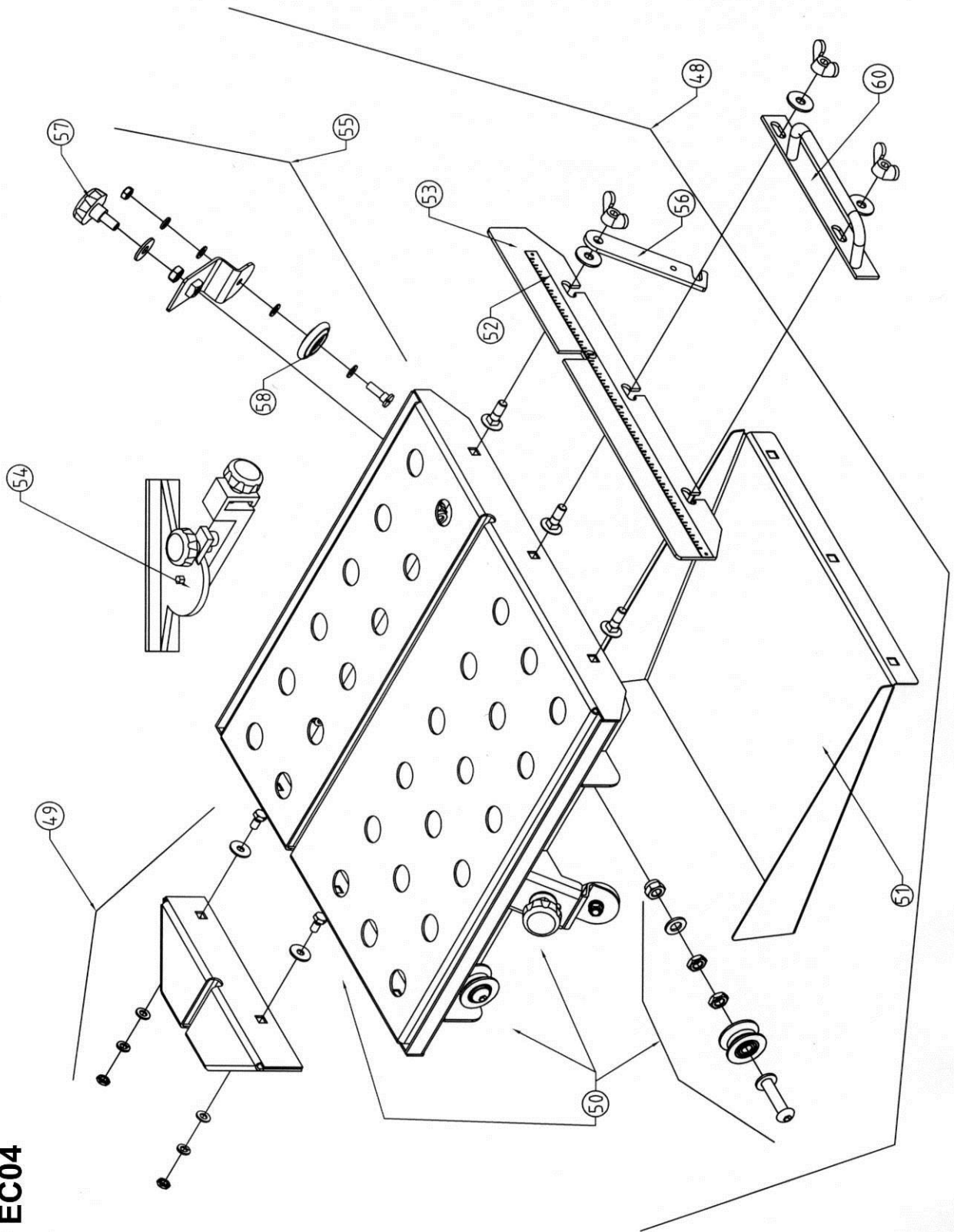




EC03



EC04











[www.construction.norton.eu](http://www.construction.norton.eu)

**Saint-Gobain Abrasives**

190, Bd. J. F. Kennedy  
L-4930 BASCHARAGE  
LUXEMBOURG

Tel: ++352 50401-1

Fax: ++352 501633

e-mail: [sales.nlx@saint-gobain.com](mailto:sales.nlx@saint-gobain.com)